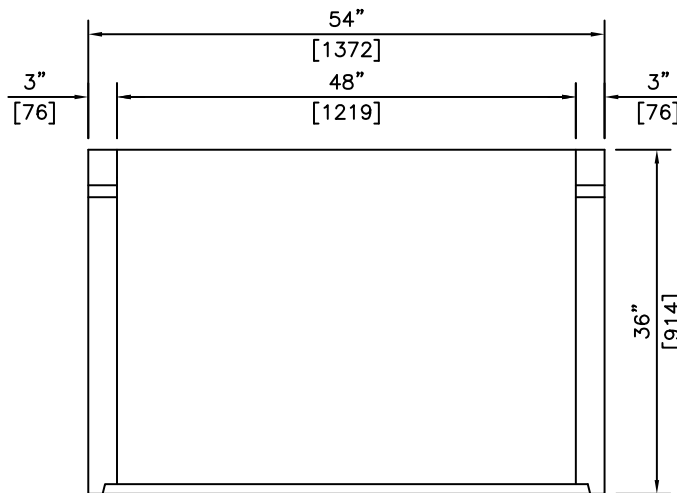


NOTE:
HOLE SIZE FOR ϕ 1" LIFTING
PINS = ϕ 1 1/4"

ISOMETRIC



SECTION

NOTES:

1) 27.6 MPa @ 28 DAYS

ITEM No.	INSIDE DIAMETER	HEIGHT
314	48" (1219)	12" (305)
315	48" (1219)	24" (610)
316	AS SHOWN	

REVISED: MAR 31 2006



"Committed To Quality And Service"

KON KAST

products (2005) Ltd.

3440 UNIVERSITY WAY
KELOWNA B.C.
V1V 1V9

PH: (250)765-1423

FX: (250)765-0820

BY: PKR

DATE: FEB 15 05

SCALE: NTS

**48" (1219)
DIAMETER
WELL RINGS**

ITEM NO.

**314
TO
316**