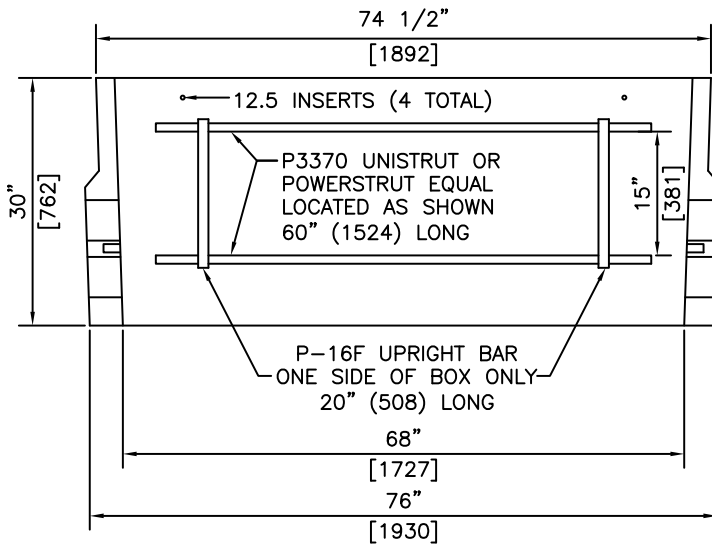
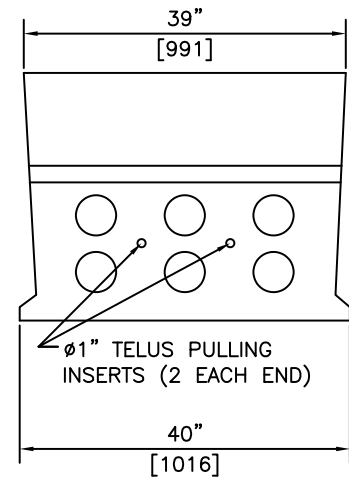


Ø5/16" G.A.C. LIFTING CABLE  
 BREAKING STRENGTH = 9800LBS (4445KG)  
 ONE OFFSET ON EACH SIDE WALL

**ISOMETRIC**



**SECTION**



**END VIEW**

**NOTES:**

- 1) 30 MPa @ 28 DAYS
- 2) MEETS H-20 LOADING
- 3) TYPE 50 CONCRETE

REVISED: MAY 3 2006



**KON KAST**

products (2005) Ltd.  
 "Committed To Quality And Service"

3440 UNIVERSITY WAY  
 KELOWNA B.C.  
 V1V 1V9  
 PH: (250)765-1423  
 FX: (250)765-0820

BY: PKR

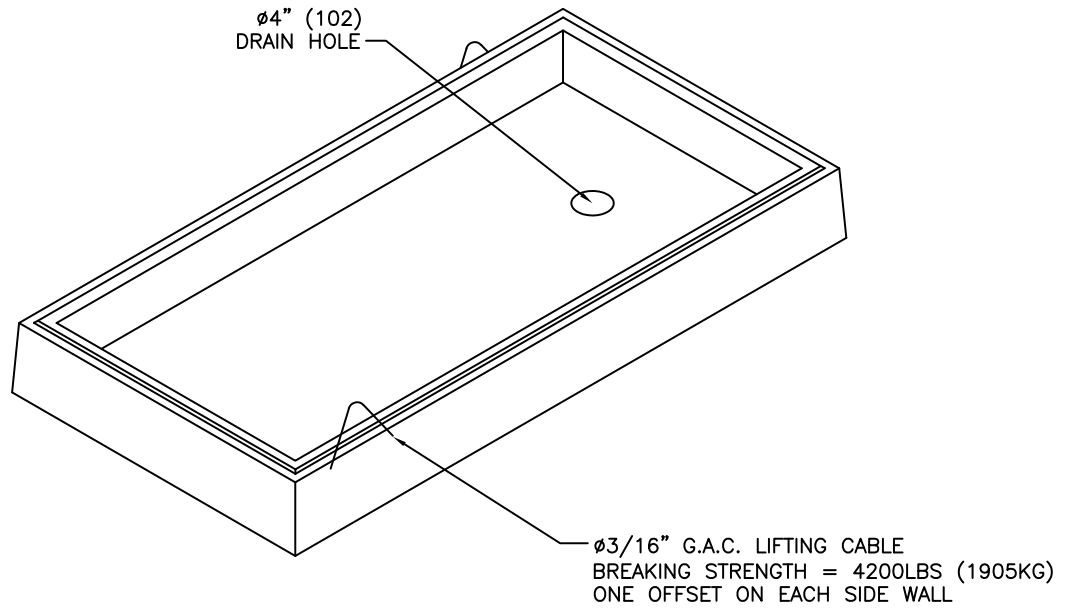
DATE: MAR 3 05

SCALE: NTS

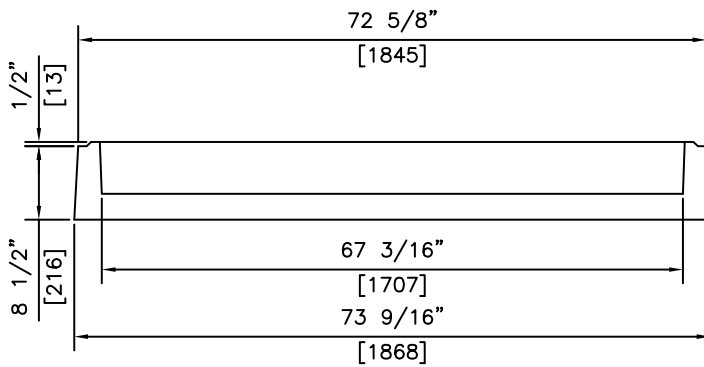
**SPLICE BOX**

ITEM NO.

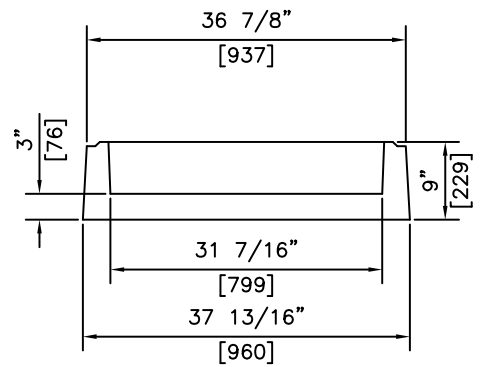
**1102**



**ISOMETRIC**



**SECTION**




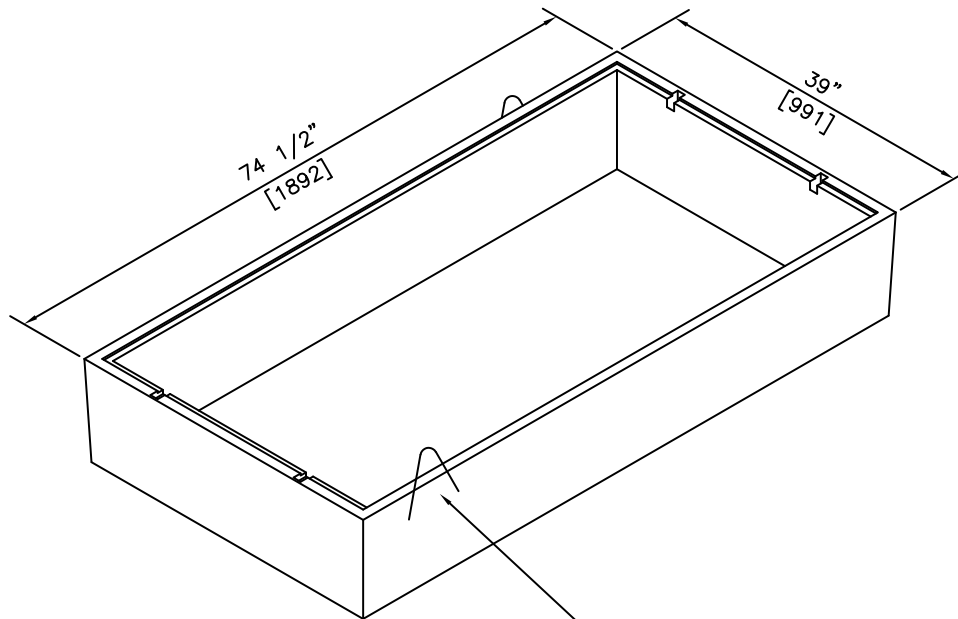
**END VIEW**

**NOTES:**

- 1) 30 MPa @ 28 DAYS
- 2) MEETS H-20 LOADING
- 3) TYPE 50 CONCRETE

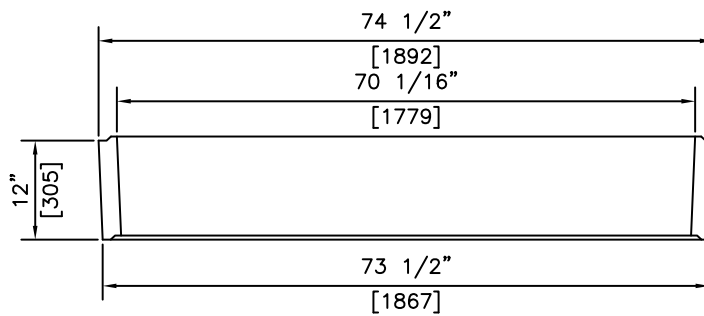
REVISED: MAY 3 2006

 <p><b>KON KAST</b> products (2005) Ltd. "Committed To Quality And Service"</p>	<p>3440 UNIVERSITY WAY KELOWNA B.C. V1V 1V9 PH: (250)765-1423 FX: (250)765-0820</p>	BY: PKR	<p><b>SPLICE BOX BASE</b></p>	ITEM NO.
		DATE: MAR 3 05		<p><b>1102B</b></p>
		SCALE: NTS		

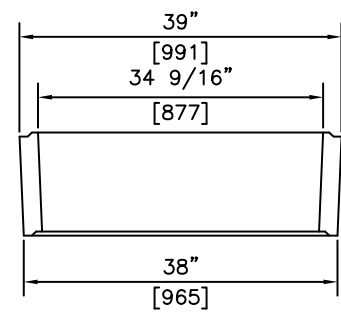


$\varnothing 5/16$ " G.A.C. LIFTING CABLE  
 BREAKING STRENGTH = 9800LBS (4445KG)  
 ONE OFFSET ON EACH SIDE WALL

**ISOMETRIC**



**SECTION**




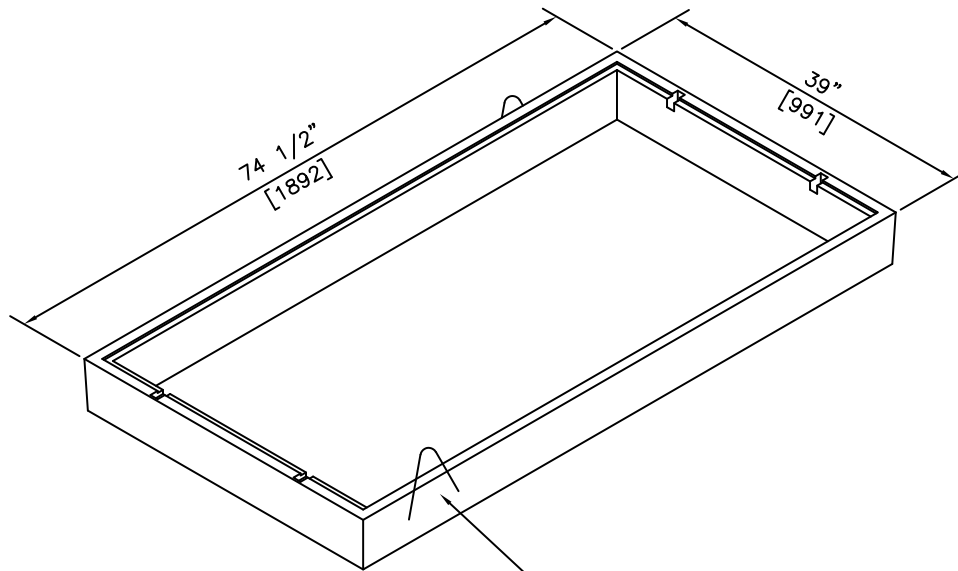
**END VIEW**

**NOTES:**

- 1) 30 MPa @ 28 DAYS
- 2) MEETS H-20 LOADING
- 3) TYPE 50 CONCRETE

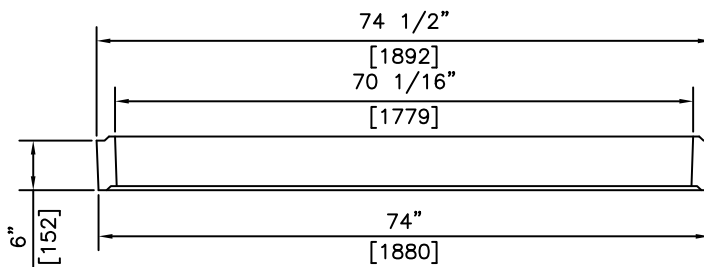
REVISED: MAR 3 2005

 <b>KON KAST</b> products (2005) Ltd. "Committed To Quality And Service"	3440 UNIVERSITY WAY KELOWNA B.C. V1V 1V9 PH: (250)765-1423 FX: (250)765-0820	BY: PKR	<b>1102</b> <b>SPLICE BOX</b> <b>12" (305) RISER</b>	ITEM NO.
		DATE: MAR 3 05		<b>1102R12</b>
		SCALE: NTS		

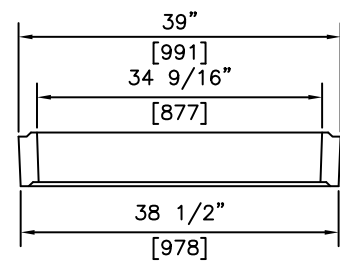


$\varnothing 5/16$ " G.A.C. LIFTING CABLE  
 BREAKING STRENGTH = 9800LBS (4445KG)  
 ONE OFFSET ON EACH SIDE WALL

**ISOMETRIC**



**SECTION**



**END VIEW**

**NOTES:**

- 1) 30 MPa @ 28 DAYS
- 2) MEETS H-20 LOADING
- 3) TYPE 50 CONCRETE

REVISED: MAR 3 2005



**KON KAST**

products (2005) Ltd.  
 "Committed To Quality And Service"

3440 UNIVERSITY WAY  
 KELOWNA B.C.  
 V1V 1V9  
 PH: (250)765-1423  
 FX: (250)765-0820

BY: PKR

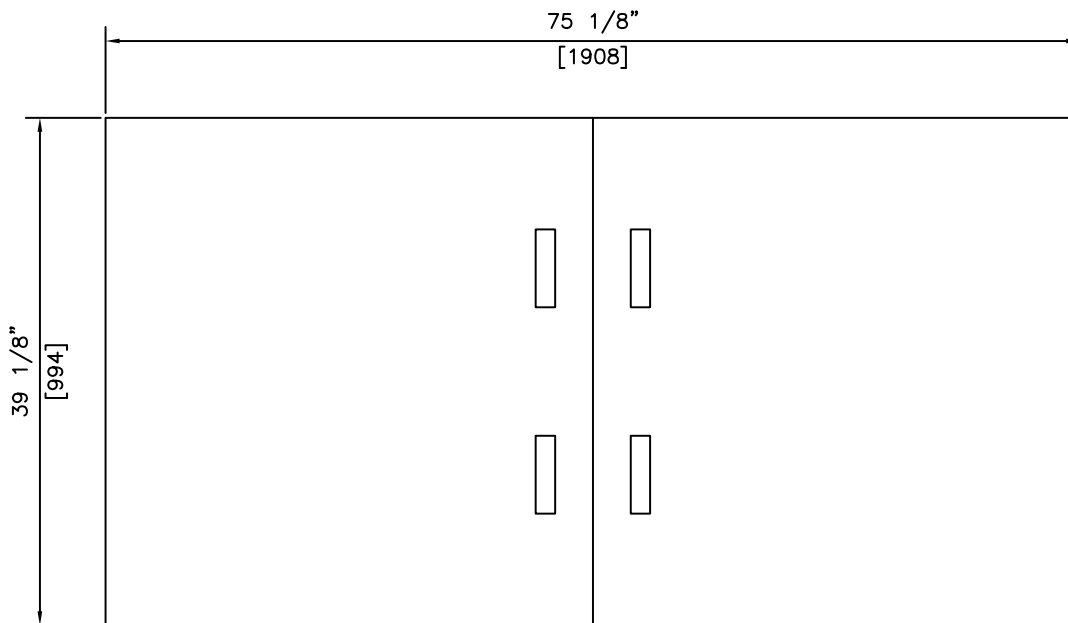
DATE: MAR 3 05

SCALE: NTS

**1102**  
**SPLICE BOX**  
**6" (152) RISER**

ITEM NO.

**1102R6**




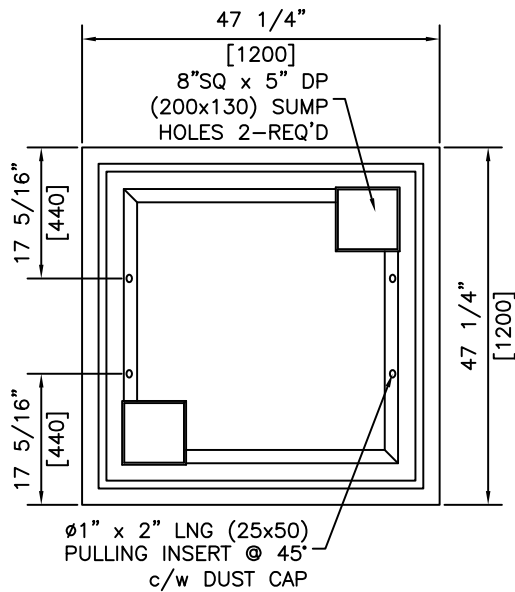
**PLAN VIEW**

**NOTES:**

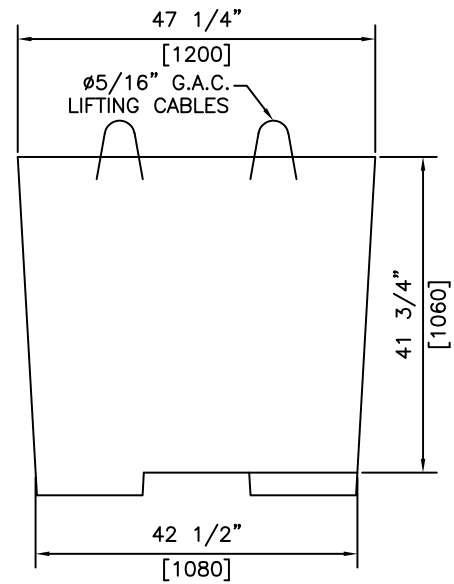
1) 1/4" CHECKER PLATE MATERIAL

REVISED: MAR 3 2005

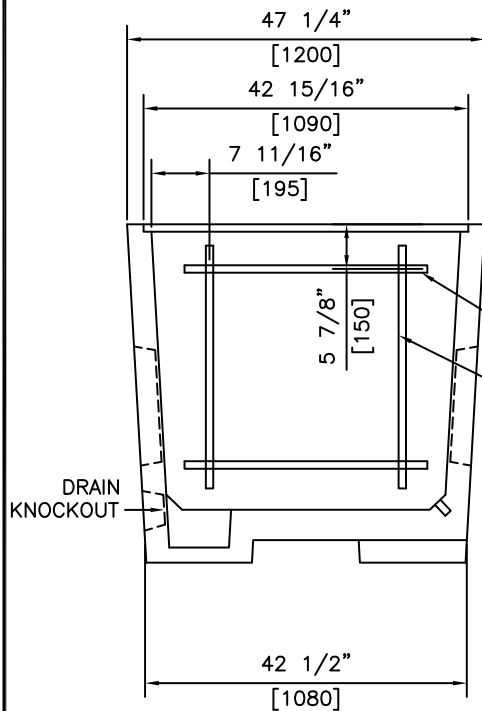
 <p><b>KON KAST</b> products (2005) Ltd. "Committed To Quality And Service"</p>	<p>3440 UNIVERSITY WAY KELOWNA B.C. V1V 1V9 PH: (250)765-1423 FX: (250)765-0820</p>	BY: PKR	<p><b>SPLICE BOX</b> <b>1/4" CHECKER</b> <b>PLATE LID</b></p>	ITEM NO.
		DATE: MAR 3 05		<p><b>1104</b></p>
		SCALE: NTS		



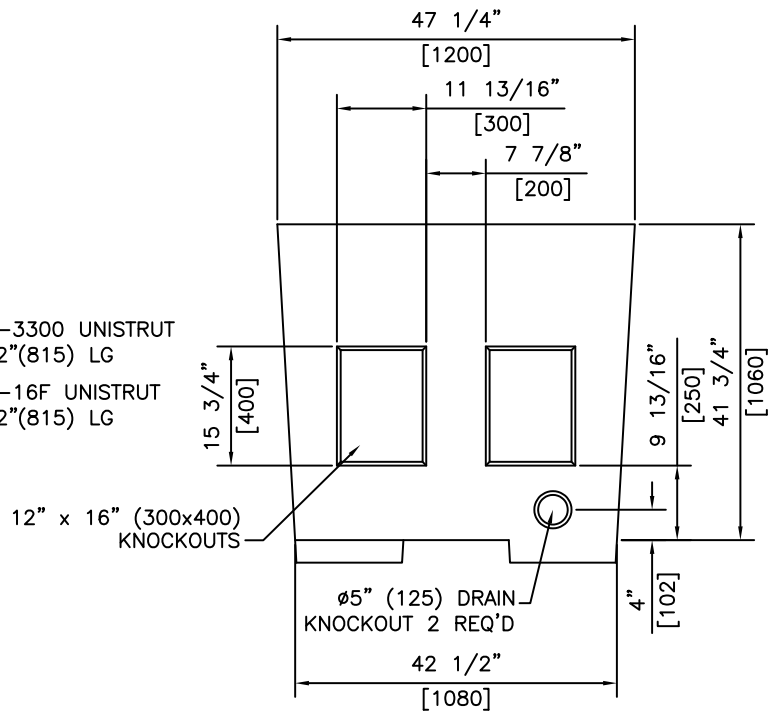
**SECTION**



**ELEVATION - FRONT VIEW**



**SECTION**



**ELEVATION - SIDE VIEW**

**NOTES:**

- 1) 30 MPa @ 28 DAYS
- 2) MEETS H-20 LOADING
- 3) TYPE 50 CONCRETE

REVISED: MAY 3 2006



**KON KAST**

products (2005) Ltd.  
 "Committed To Quality And Service"

3440 UNIVERSITY WAY  
 KELOWNA B.C.  
 V1V 1V9  
 PH: (250)765-1423  
 FX: (250)765-0820

BY: PKR

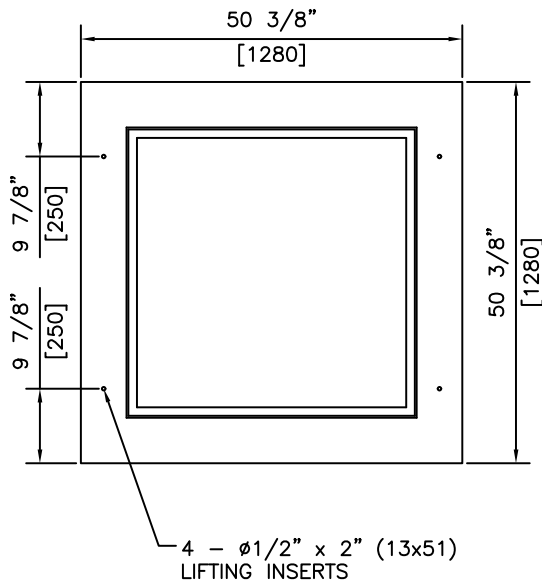
DATE: MAR 3 05

SCALE: NTS

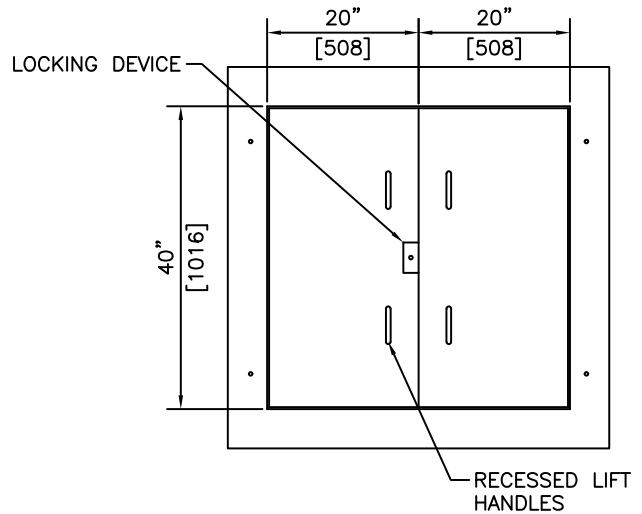
**TELUS  
 1.2M SERVICE  
 VAULT**

ITEM NO.

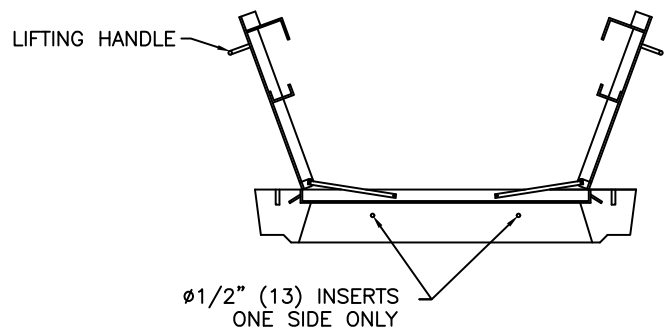
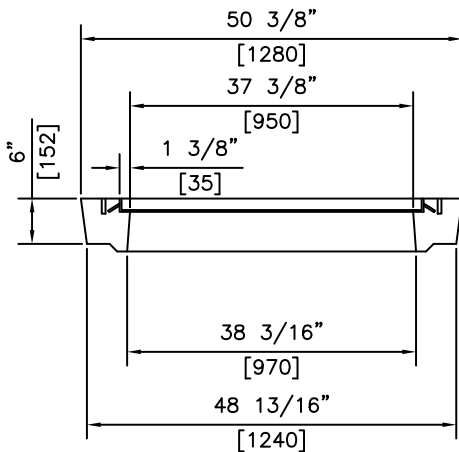
**1105**



**PLAN VIEW**  
**CONC. LID & GALV. FRAME**



**PLAN VIEW**  
**CONC. LID & STEEL DOORS**



**SECTIONS**

**NOTES:**

- 1) 30 MPa @ 28 DAYS
- 2) MEETS H-20 LOADING
- 3) TYPE 50 CONCRETE

REVISED: MAY 3 2006



**KON KAST**

products (2005) Ltd.  
"Committed To Quality And Service"

3440 UNIVERSITY WAY  
KELOWNA B.C.  
V1V 1V9  
PH: (250)765-1423  
FX: (250)765-0820

BY: PKR

DATE: MAR 3 50

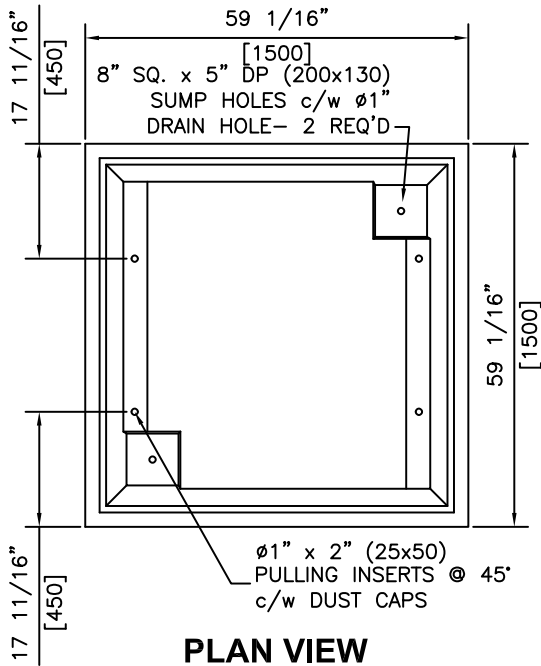
SCALE: NTS

**TELUS**

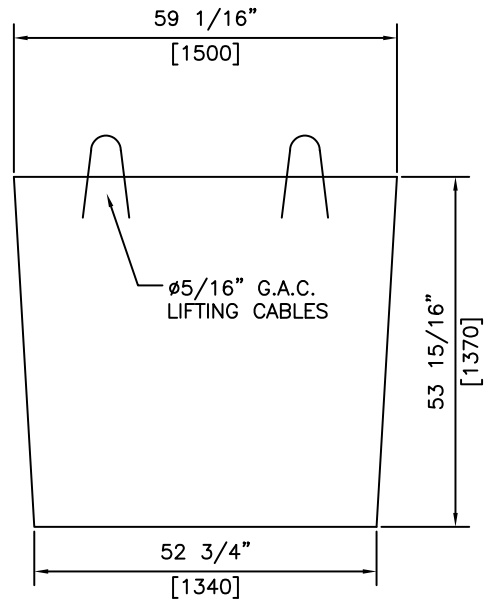
**1.2M SERVICE VAULT**  
**LID - H20 LOADING**

ITEM NO.

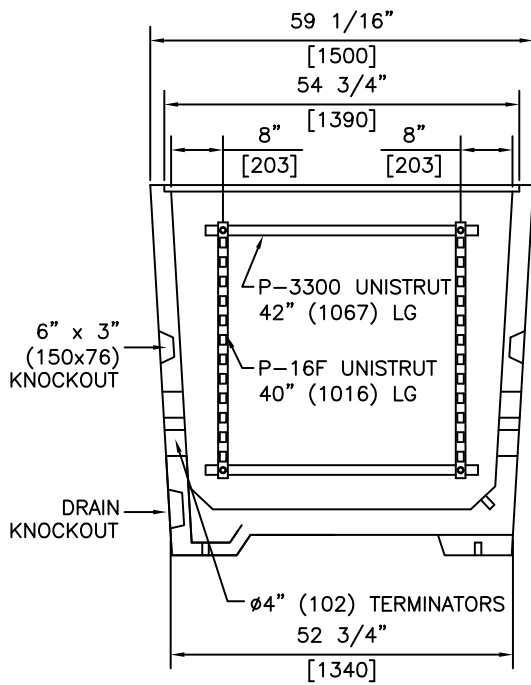
**1110**



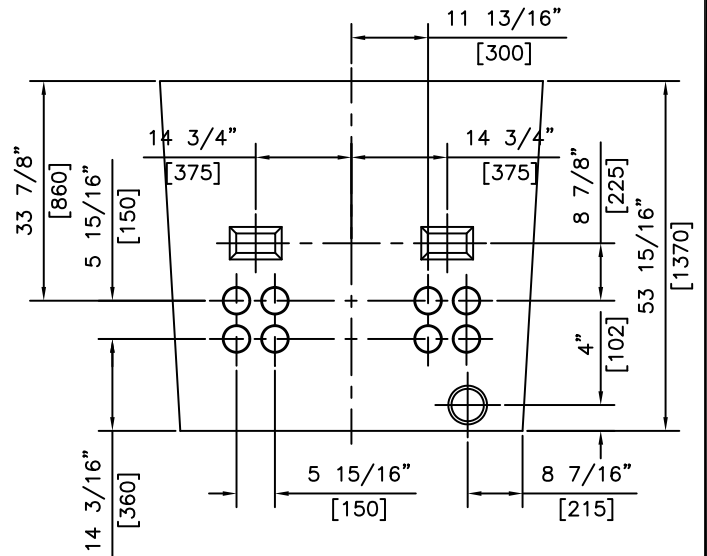
**PLAN VIEW**



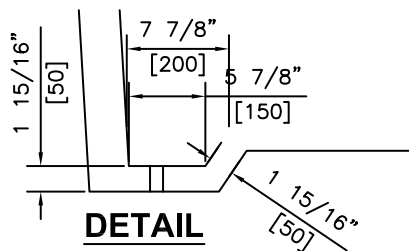
**ELEVATION - FRONT VIEW**



**SECTION VIEW**



**ELEVATION - SIDE VIEW**



**DETAIL**

**NOTES:**

- 1) 30 MPa @ 28 DAYS
- 2) MEETS H-20 LOADING
- 3) TYPE 50 CONCRETE

REVISED: MAY 3 2006



**KON KAST**

products (2005) Ltd.  
 "Committed To Quality And Service"

3440 UNIVERSITY WAY  
 KELOWNA B.C.  
 V1V 1V9  
 PH: (250)765-1423  
 FX: (250)765-0820

BY: PKR

DATE: MAR 3 05

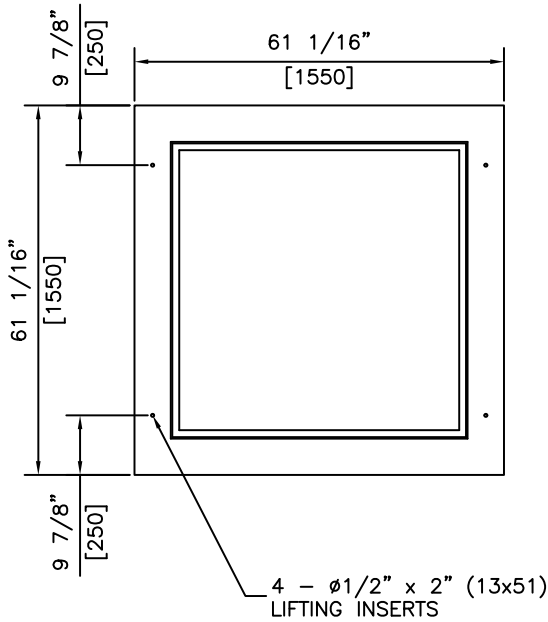
SCALE: NTS

**TELUS  
 1.5 SERVICE  
 VAULT**

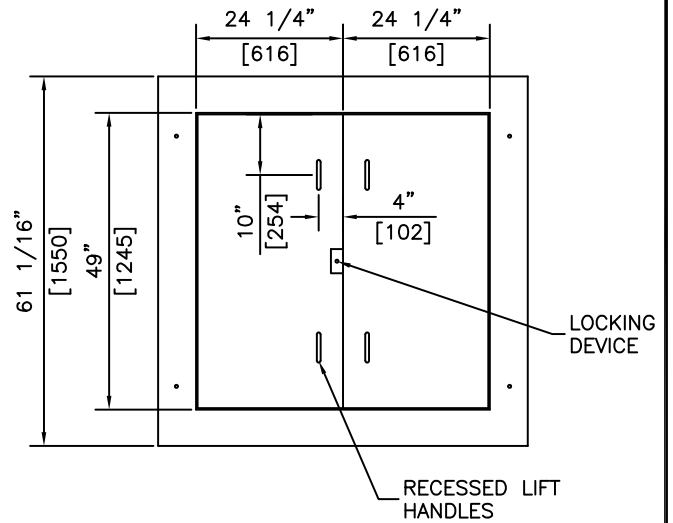
ITEM NO.

**1115**

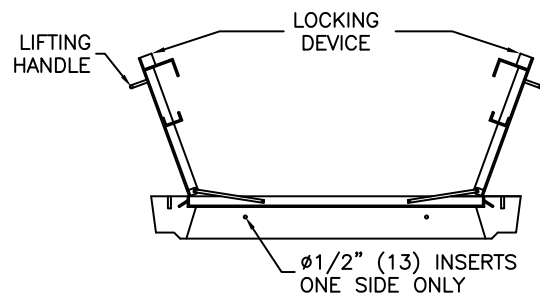
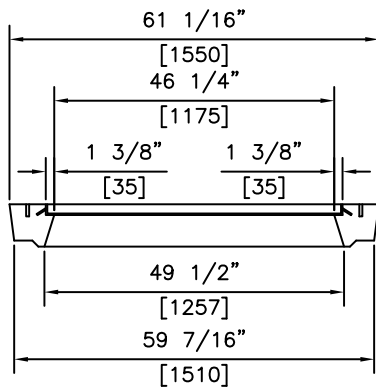




**PLAN VIEW**  
**CONC. LID & GALV. FRAME**



**PLAN VIEW**  
**CONC. LID & STEEL DOORS**



**SECTIONS**

**NOTES:**

- 1) 27.6 MPa @ 28 DAYS
- 2) MEETS H-20 LOADING
- 3) TYPE 50 CONCRETE

REVISED: MAY 3 2006



**KON KAST**

products (2005) Ltd.  
"Committed To Quality And Service"

3440 UNIVERSITY WAY  
KELOWNA B.C.  
V1V 1V9  
PH: (250)765-1423  
FX: (250)765-0820

BY: PKR

DATE: MAR 4 2005

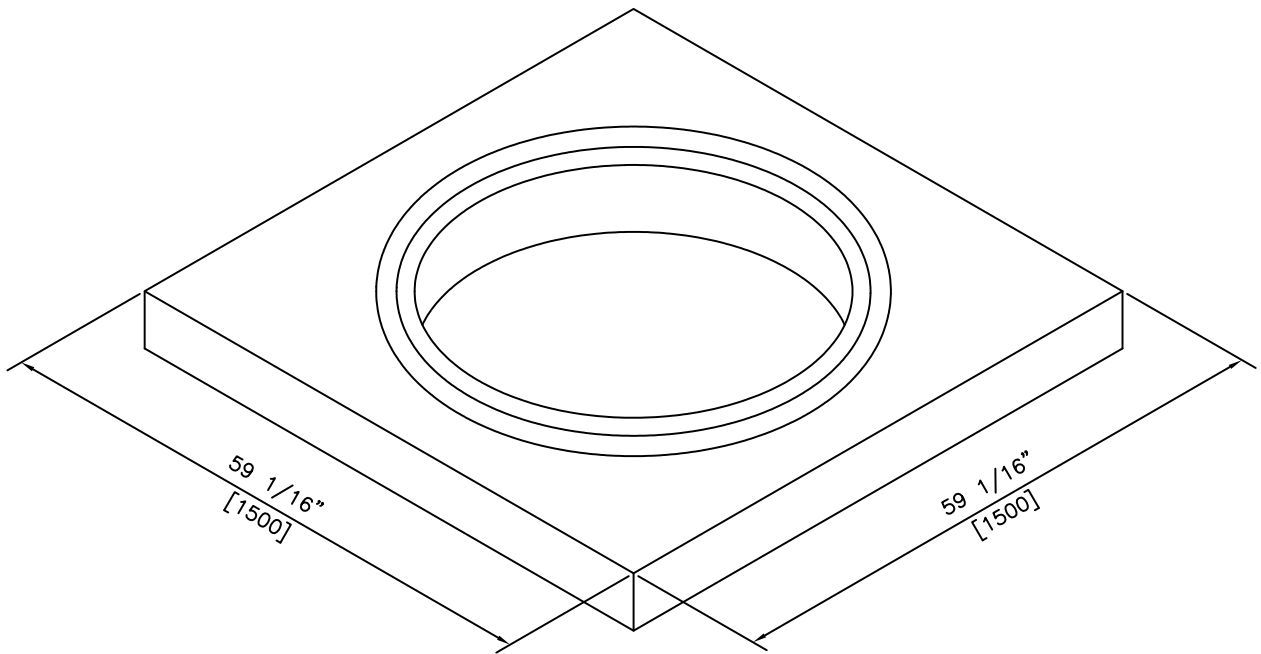
SCALE: NTS

**TELUS**

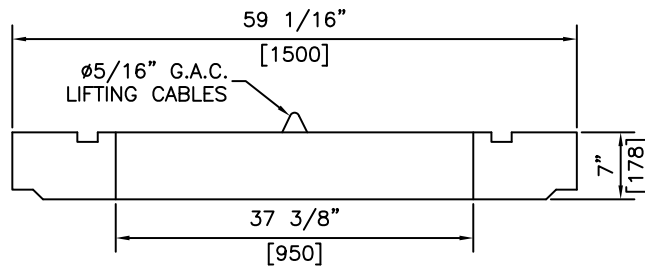
**1.5M SERVICE VAULT**  
**LID H-20 LOADING**

ITEM NO.

**1120**



**PLAN**




**SECTION**

**NOTES:**

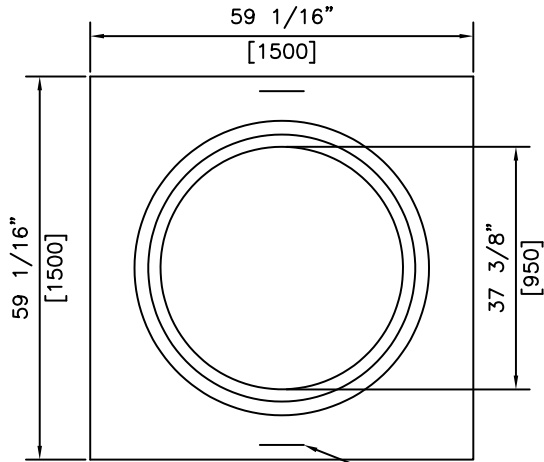
- 1) 30 MPa @ 28 DAYS
- 2) MEETS H-20 LOADING
- 3) TYPE 50 CONCRETE

REVISED: MAR 4 2005

 <p><b>KON KAST</b> products (2005) Ltd. "Committed To Quality And Service"</p>	<p>3440 UNIVERSITY WAY KELOWNA B.C. V1V 1V9 PH: (250)765-1423 FX: (250)765-0820</p>	BY: PKR	<p><b>1.5M</b> <b>SERVICE VAULT</b> <b>CIRCULAR CONCRETE LID</b></p>	ITEM NO.
		DATE: MAR 4 05		<p><b>1125</b></p>
		SCALE: NTS		

# 1.5 SERVICE VAULT CIRCULAR LID

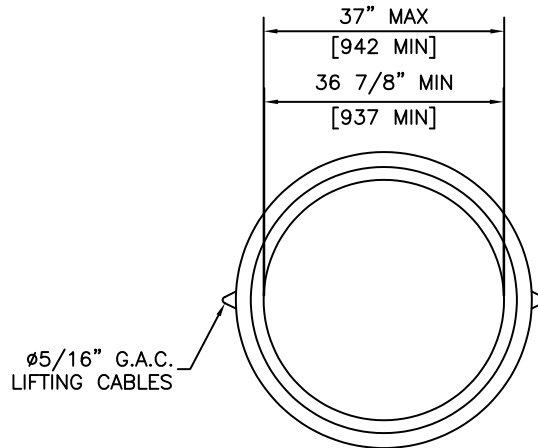
(ITEM 1135)



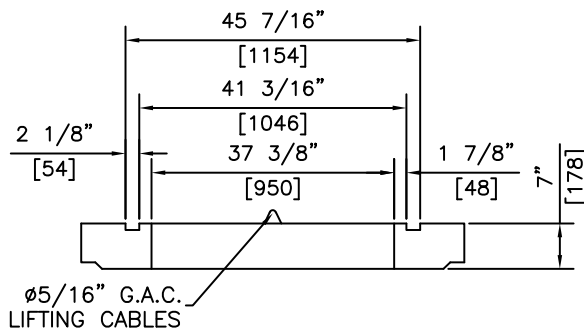
**PLAN**

# TELEPHONE EXTENSION RING

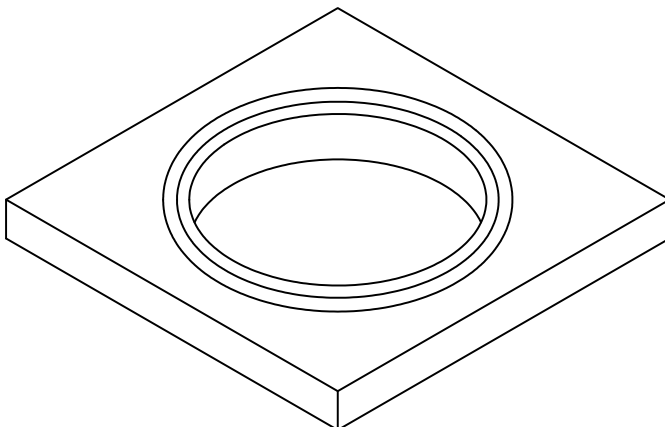
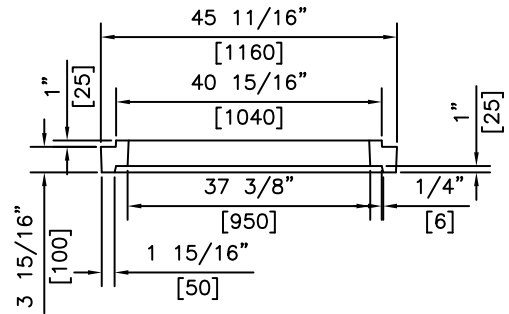
(ITEM 1135)



**PLAN**



**SECTION**



**PLAN**

ALL MEASUREMENTS ARE IN MILLIMETRES

ITEM # 1135 AVAILABLE IN 100mm HEIGHT

WEIGHT = 62Kg

ITEM # 1136 AVAILABLE IN 125mm HEIGHT

WEIGHT = 103Kg

ITEM # 1137 AVAILABLE IN 150mm HEIGHTS

WEIGHT = 124Kg

TOTAL DEAD WEIGHT OF 1.5M SERVICE VAULT CIRCULAR LID IS 680 Kg

**NOTES:**

- 1) 30 MPa @ 28 DAYS
- 2) MEETS H-20 LOADING
- 3) TYPE 50 CONCRETE

REVISED: MAR 4 2005



**KON KAST**

products (2005) Ltd.  
"Committed To Quality And Service"

3440 UNIVERSITY WAY  
KELOWNA B.C.  
V1V 1V9  
PH: (250)765-1423  
FX: (250)765-0820

BY: PKR

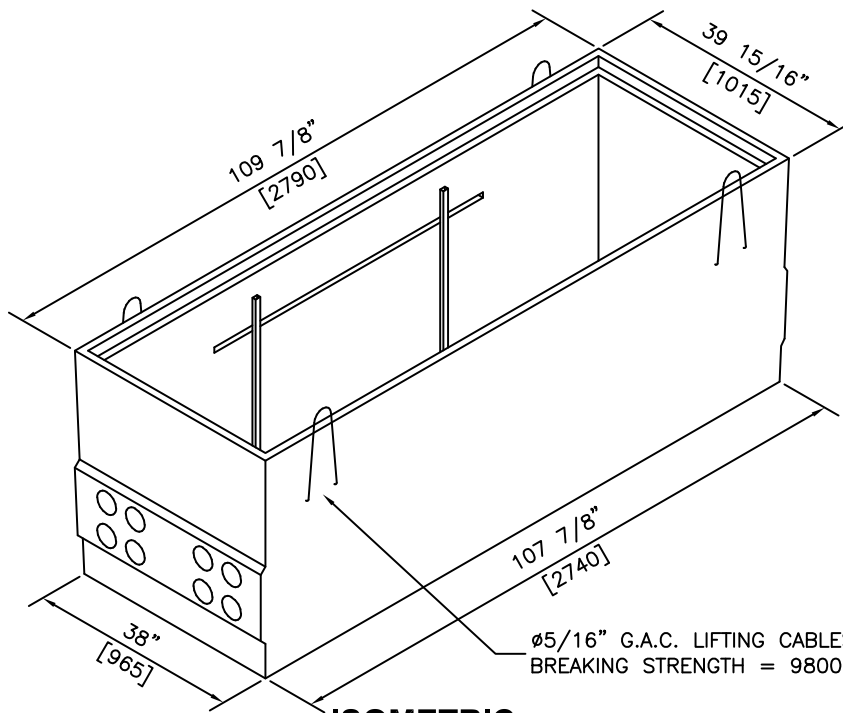
DATE: MAR 4 05

SCALE: NTS

**TELUS 1.5M SERVICE VAULT CIRCULAR LID AND EXTENSION RING**

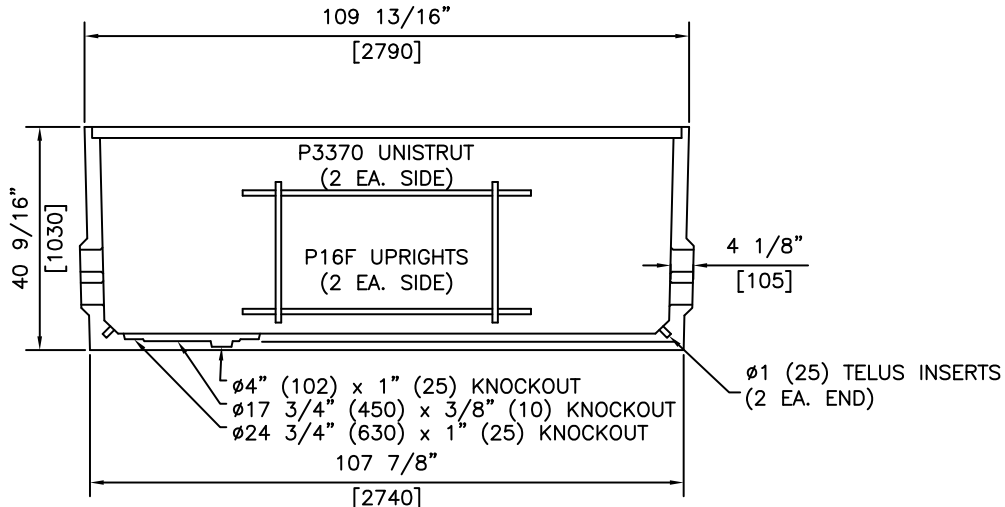
ITEM NO.

**1125/1135**

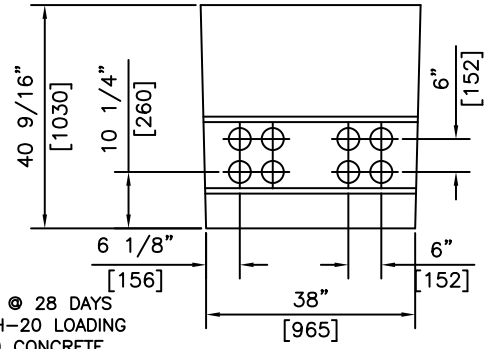


ø5/16" G.A.C. LIFTING CABLES  
 BREAKING STRENGTH = 9800lbs. (4445Kg)

**ISOMETRIC**




**SECTION**

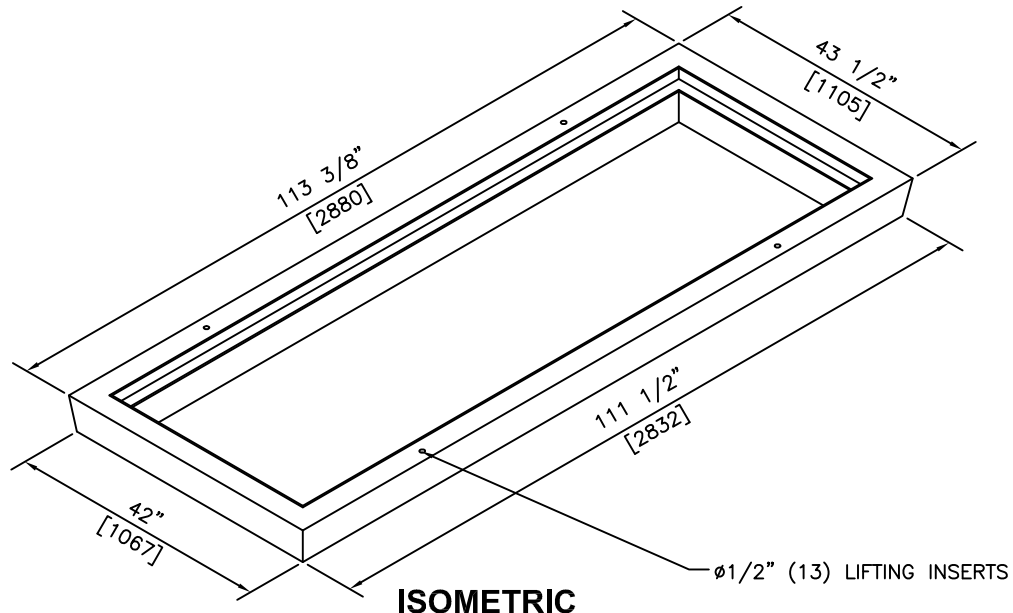


**END ELEVATION**

- NOTES:**
- 1) 30 MPa @ 28 DAYS
  - 2) MEETS H-20 LOADING
  - 3) TYPE 50 CONCRETE

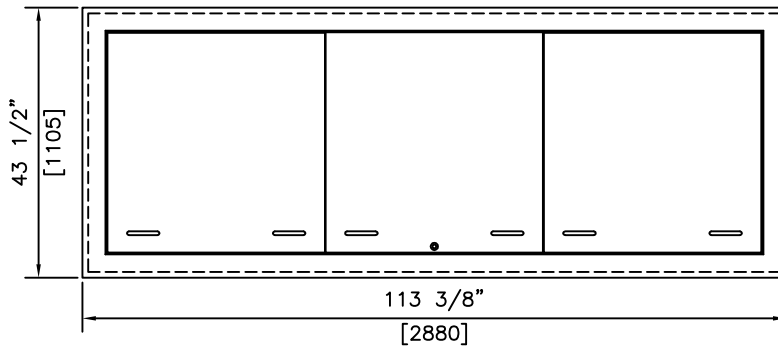
REVISED: MAY 3 2006

 <p><b>KON KAST</b>          products (2005) Ltd.          "Committed To Quality And Service"</p>	3440 UNIVERSITY WAY KELOWNA B.C. V1V 1V9 PH: (250)765-1423 FX: (250)765-0820	BY: PKR	<b>832          JUNCTION          VAULT</b>	ITEM NO.
		DATE: MAR 4 05		<b>1132</b>
		SCALE: NTS		

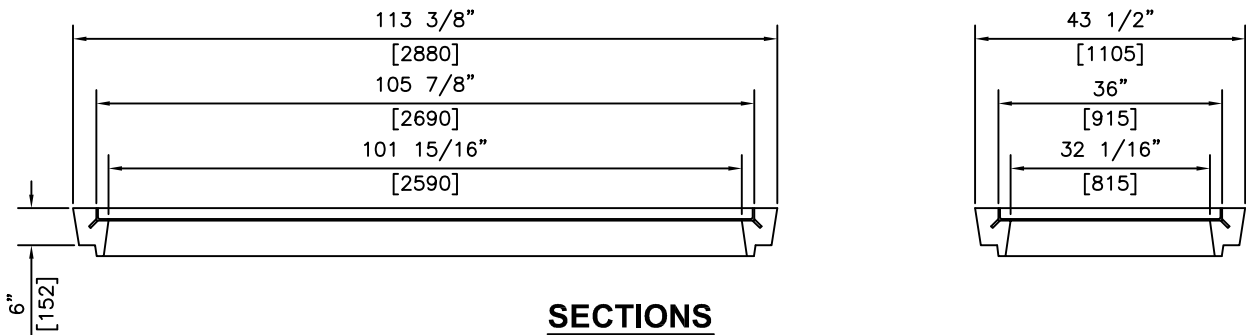


**ISOMETRIC**

ø1/2" (13) LIFTING INSERTS



**PLAN VIEW - c/w STEEL LID**




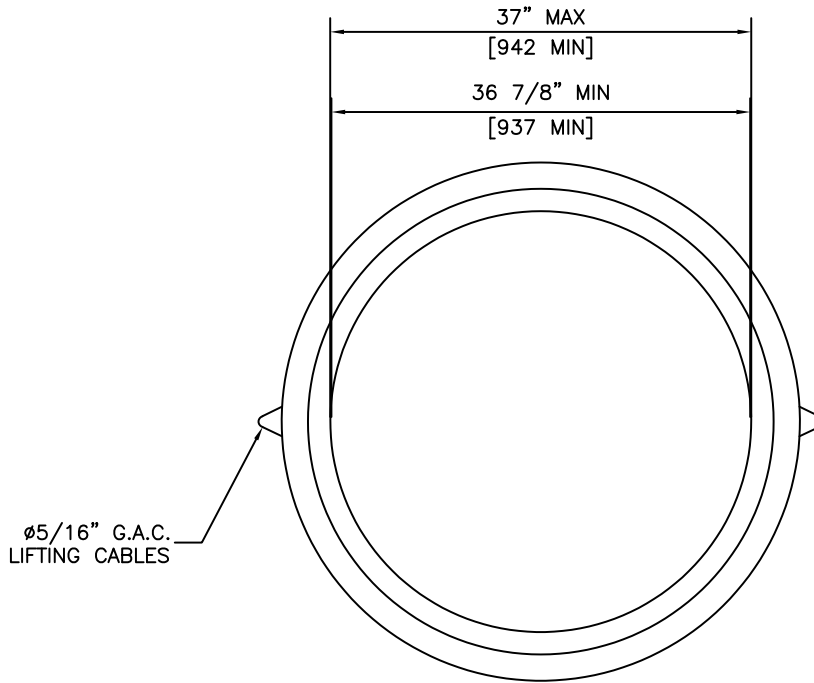
**SECTIONS**

**NOTES:**

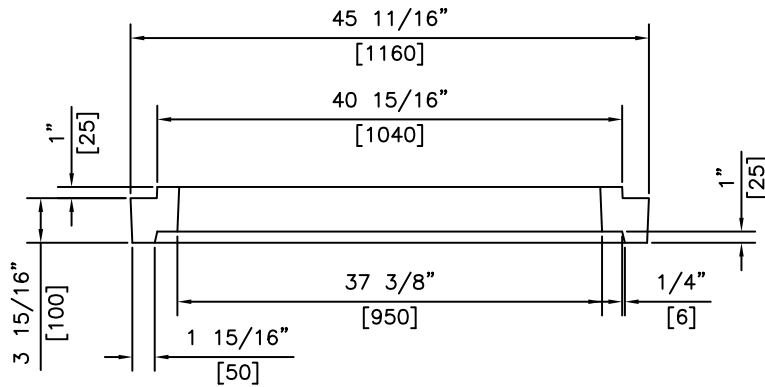
- 1) 30 MPa @ 28 DAYS
- 2) MEETS H-20 LOADING
- 3) SULPHATE RESISTANT CONCRETE

REVISED: OCT 8 2014

 <p><b>KON KAST</b> products (2005) Ltd. "Committed To Quality And Service"</p>	<p>1313 INNOVATION DR KELOWNA B.C. V1V 3B3 PH: (250)765-1423 FX: (250)765-0820</p>	BY: PKR	<p><b>832 JUNCTION VAULT CONC. COLLAR</b></p>	DRAWING
		DATE: MAR 7 05		<p><b>1133</b></p>
		SCALE: NTS		



**PLAN**




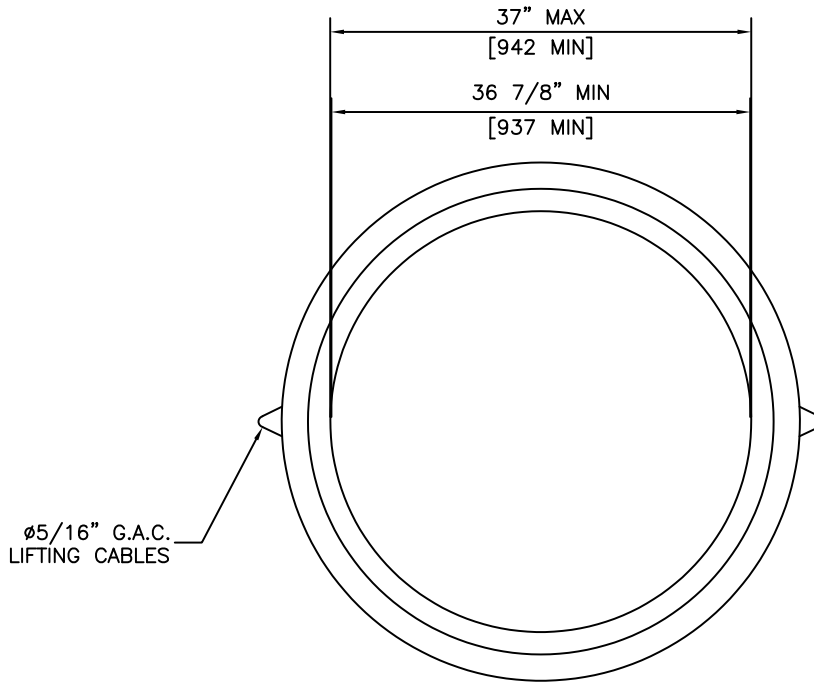
**SECTION**

**NOTES:**

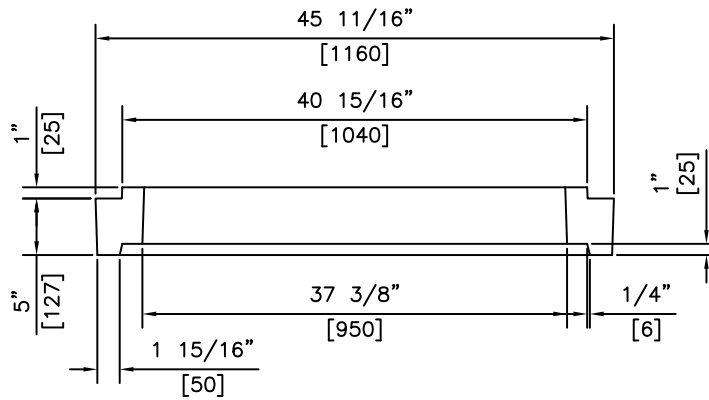
- 1) 30 MPa @ 28 DAYS
- 2) MEETS H-20 LOADING
- 3) TYPE 50 CONCRETE

REVISED: MAR 4 2005

 <p><b>KON KAST</b> products (2005) Ltd. "Committed To Quality And Service"</p>	<p>3440 UNIVERSITY WAY KELOWNA B.C. V1V 1V9 PH: (250)765-1423 FX: (250)765-0820</p>	BY: PKR	<p><b>TELUS TELEPHONE</b> <b>100mm EXTENSION</b> <b>RING</b></p>	ITEM NO.
		DATE: MAR 4 05		<p><b>1135</b></p>
		SCALE: NTS		



**PLAN**




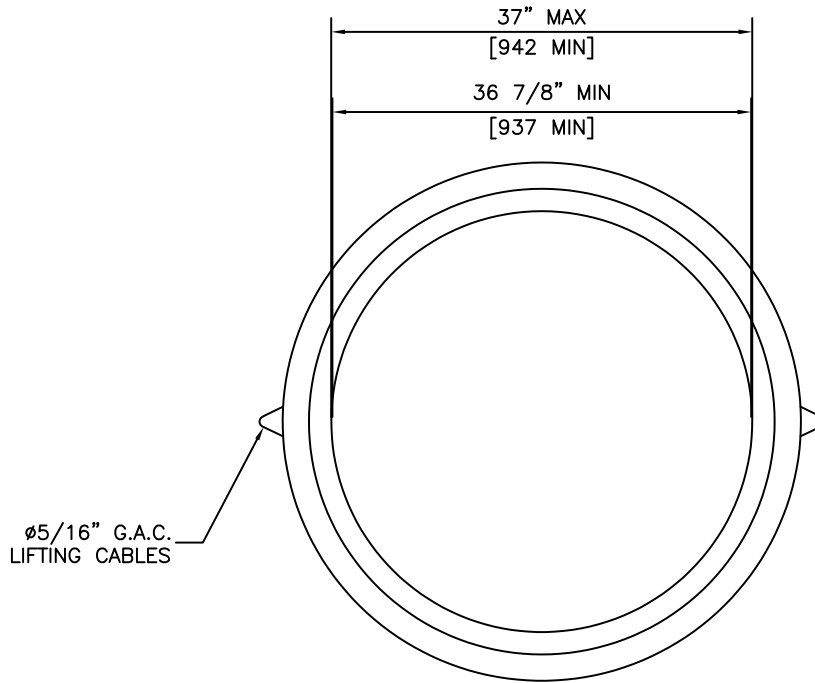
**SECTION**

**NOTES:**

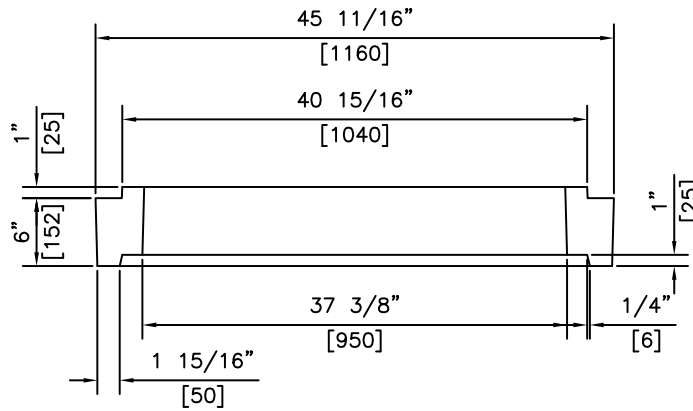
- 1) 30 MPa @ 28 DAYS
- 2) MEETS H-20 LOADING
- 3) TYPE 50 CONCRETE

REVISED: MAR 4 2005

 <p><b>KON KAST</b> products (2005) Ltd. "Committed To Quality And Service"</p>	<p>3440 UNIVERSITY WAY KELOWNA B.C. V1V 1V9 PH: (250)765-1423 FX: (250)765-0820</p>	BY: PKR	<p><b>TELUS TELEPHONE</b> <b>125mm EXTENSION</b> <b>RING</b></p>	ITEM NO.
		DATE: MAR 4 05		<p><b>1136</b></p>
		SCALE: NTS		



**PLAN**



**SECTION**

**NOTES:**

- 1) 30 MPa @ 28 DAYS
- 2) MEETS H-20 LOADING
- 3) TYPE 50 CONCRETE

REVISED: MAR 4 2005



**KON KAST**

products (2005) Ltd.  
"Committed To Quality And Service"

3440 UNIVERSITY WAY  
KELOWNA B.C.  
V1V 1V9  
PH: (250)765-1423  
FX: (250)765-0820

BY: PKR

DATE: MAR 4 05

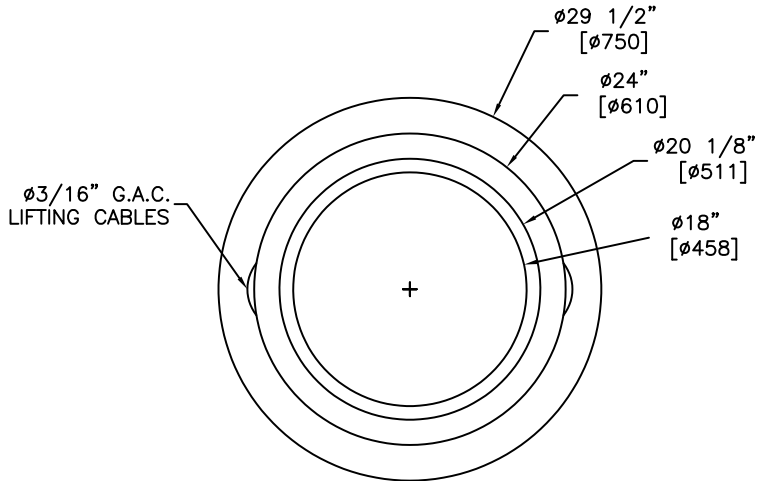
SCALE: NTS

**TELUS TELEPHONE  
150mm EXTENSION  
RING**

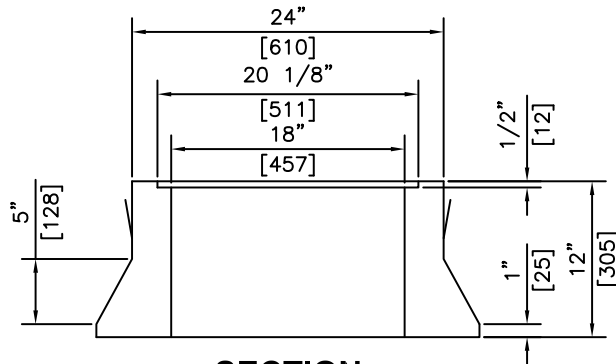
ITEM NO.

**1137**

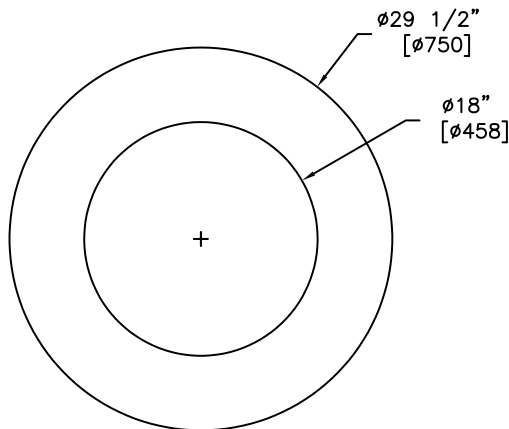




**TOP VIEW**



**SECTION**



**BOTTOM VIEW**

**NOTES:**

- 1) 30 MPa @ 28 DAYS
- 2) MEETS H-20 LOADING
- 3) TYPE 50 CONCRETE

REVISED: MAR 7 2005



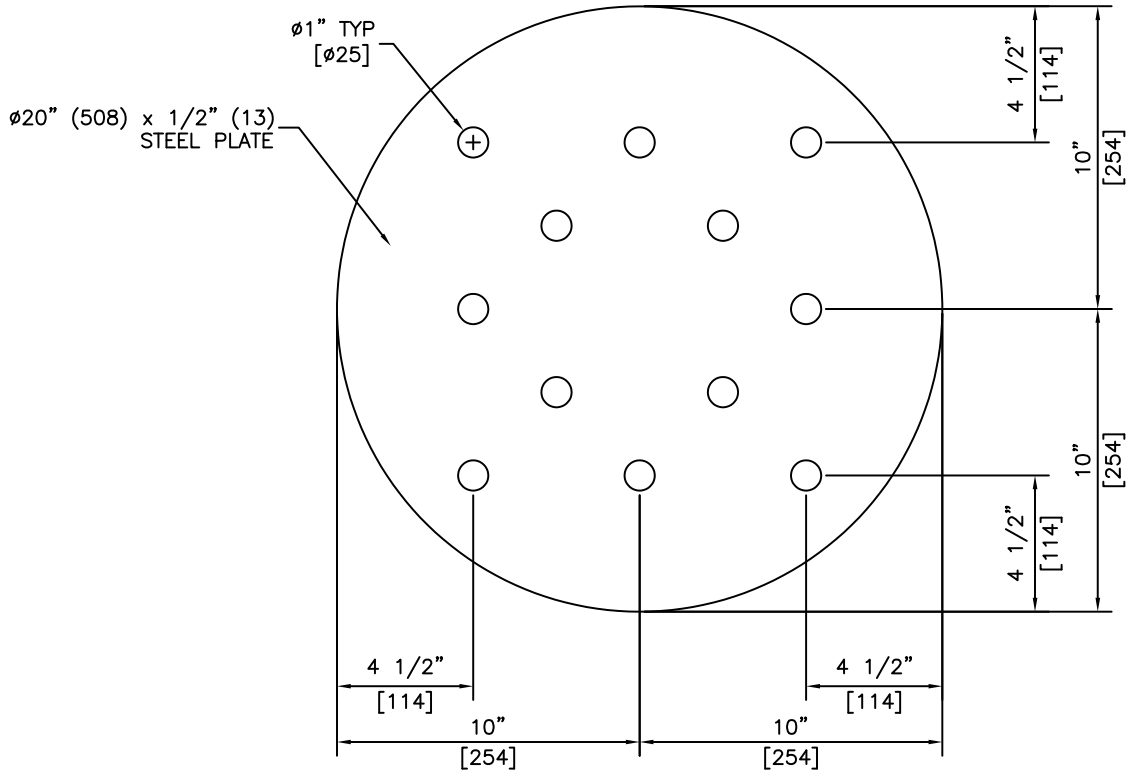
**KON KAST**  
products (2005) Ltd.  
"Committed To Quality And Service"

3440 UNIVERSITY WAY  
KELOWNA B.C.  
V1V 1V9  
PH: (250)765-1423  
FX: (250)765-0820

BY: PKR  
DATE: MAR 7 05  
SCALE: NTS

**TELUS  
L.T.S.  
RISER**

ITEM NO.  
**1140**




**TOP VIEW**

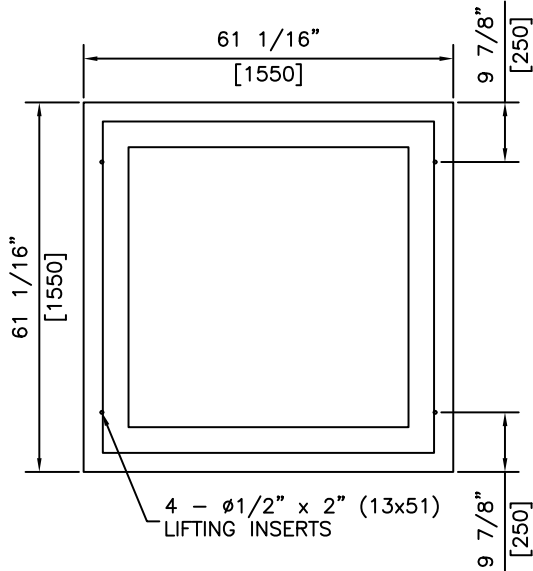
**NOTES:**

1) MEETS H-20 LOADING

REVISED: MAR 7 2005

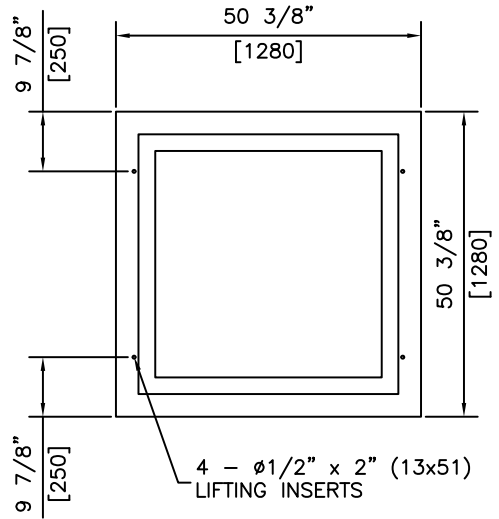
 <p><b>KON KAST</b> products (2005) Ltd. "Committed To Quality And Service"</p>	<p>3440 UNIVERSITY WAY KELOWNA B.C. V1V 1V9 PH: (250)765-1423 FX: (250)765-0820</p>	BY: PKR	<p><b>TELUS</b> <b>L.T.S.</b> <b>RISER LID</b></p>	ITEM NO.
		DATE: MAR 7 05		<p><b>1141</b></p>
		SCALE: NTS		

**150mm SPACER - 1.5 SERVICE BOX  
ITEM #1142**

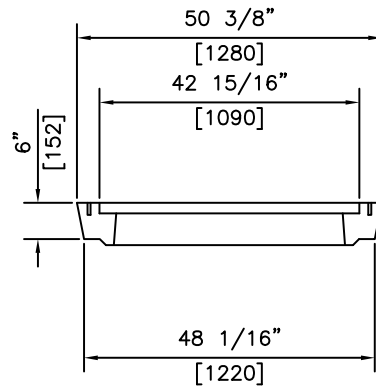
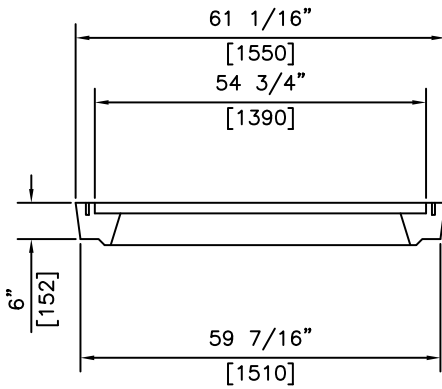


**PLAN VIEW**

**150mm SPACER - 1.2 SERVICE BOX  
ITEM #1143**



**PLAN VIEW**



**SECTIONS**

**NOTES:**

- 1) 30 MPa @ 28 DAYS
- 2) MEETS H-20 LOADING
- 3) TYPE 50 CONCRETE

REVISED: MAY 3 2006



**KON KAST**

products (2005) Ltd.  
"Committed To Quality And Service"

3440 UNIVERSITY WAY  
KELOWNA B.C.  
V1V 1V9  
PH: (250)765-1423  
FX: (250)765-0820

BY: PKR

DATE: MAR 7 05

SCALE: NTS

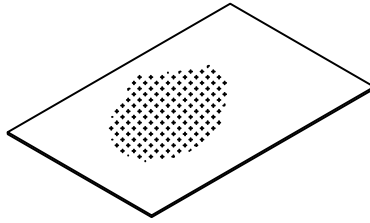
**TELUS 1.2 SERVICE  
VAULT SPACER AND 1.5  
SERVICE VAULT SPACER**

ITEM NO.

**1142/1143**

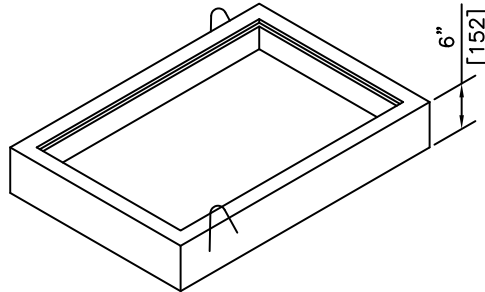
**1153 LID**

WEIGHT = 91 Lbs.



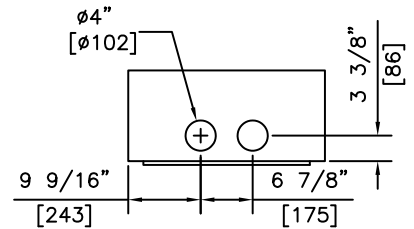
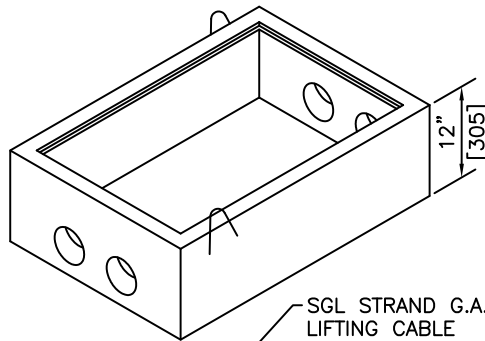
**1151R 6" RISER**

WEIGHT = 144 Lbs.



**1151 BODY  
c/w TERMINATORS**

WEIGHT = 275 Lbs.

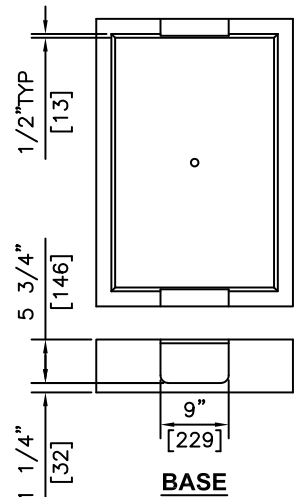
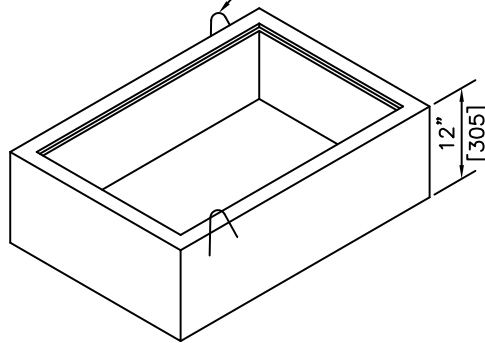


**TERMINATOR DETAIL  
TYPICAL BOTH ENDS**

SGL STRAND G.A.C.  
LIFTING CABLE  
(TYP)

**1151 BODY**

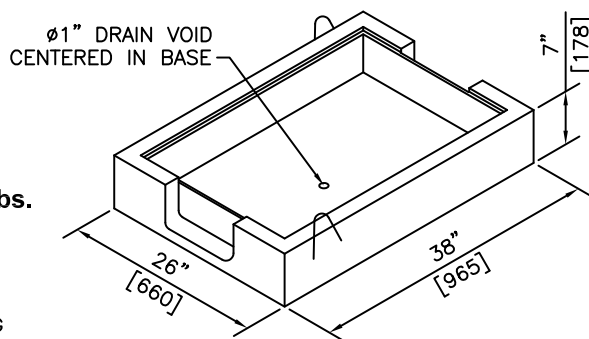
WEIGHT = 287 Lbs.



**BASE  
KNOCKOUT DETAIL  
TYPICAL BOTH ENDS**

**1152 BASE**

WEIGHT = 275 Lbs.



**NOTES:**

- 1) 30 MPa @ 28 DAYS
- 2) MEETS H-20 LOADING
- 3) TYPE 50 CONCRETE

REVISED: MAY 3 2006



**KON KAST**

products (2005) Ltd.  
"Committed To Quality And Service"

3440 UNIVERSITY WAY  
KELOWNA B.C.  
V1V 1V9  
PH: (250)765-1423  
FX: (250)765-0820

BY: PKR

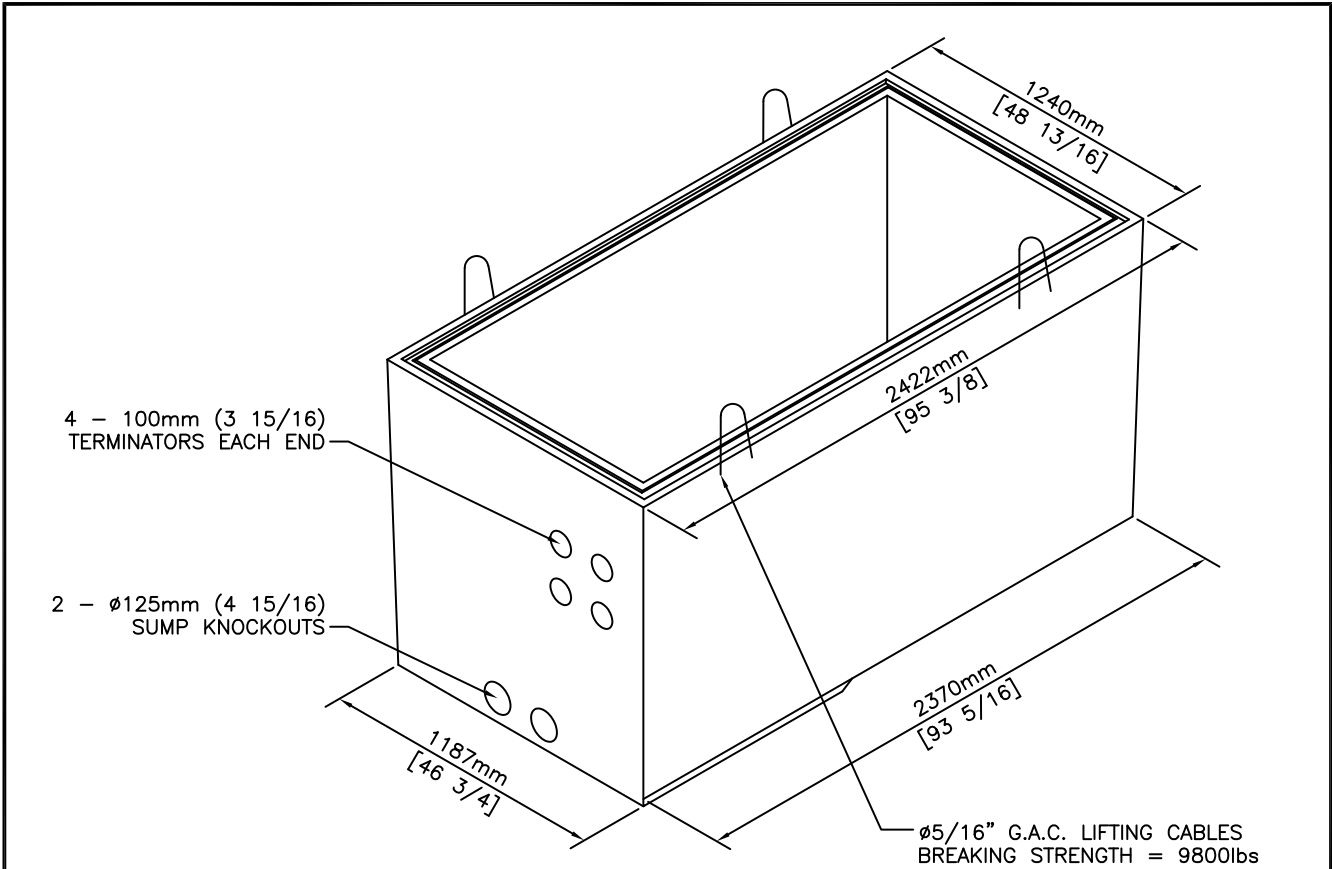
DATE: MAR 8 05

SCALE: NTS

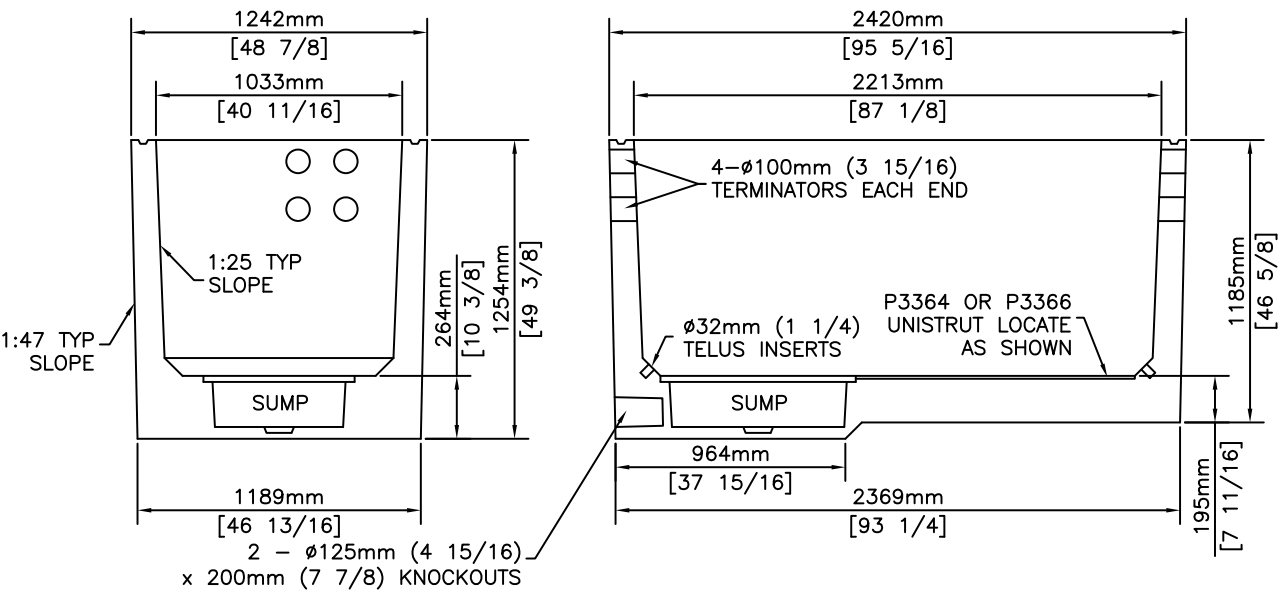
**SERVICE BOX**

ITEM NO.

**1151**




**ISOMETRIC**

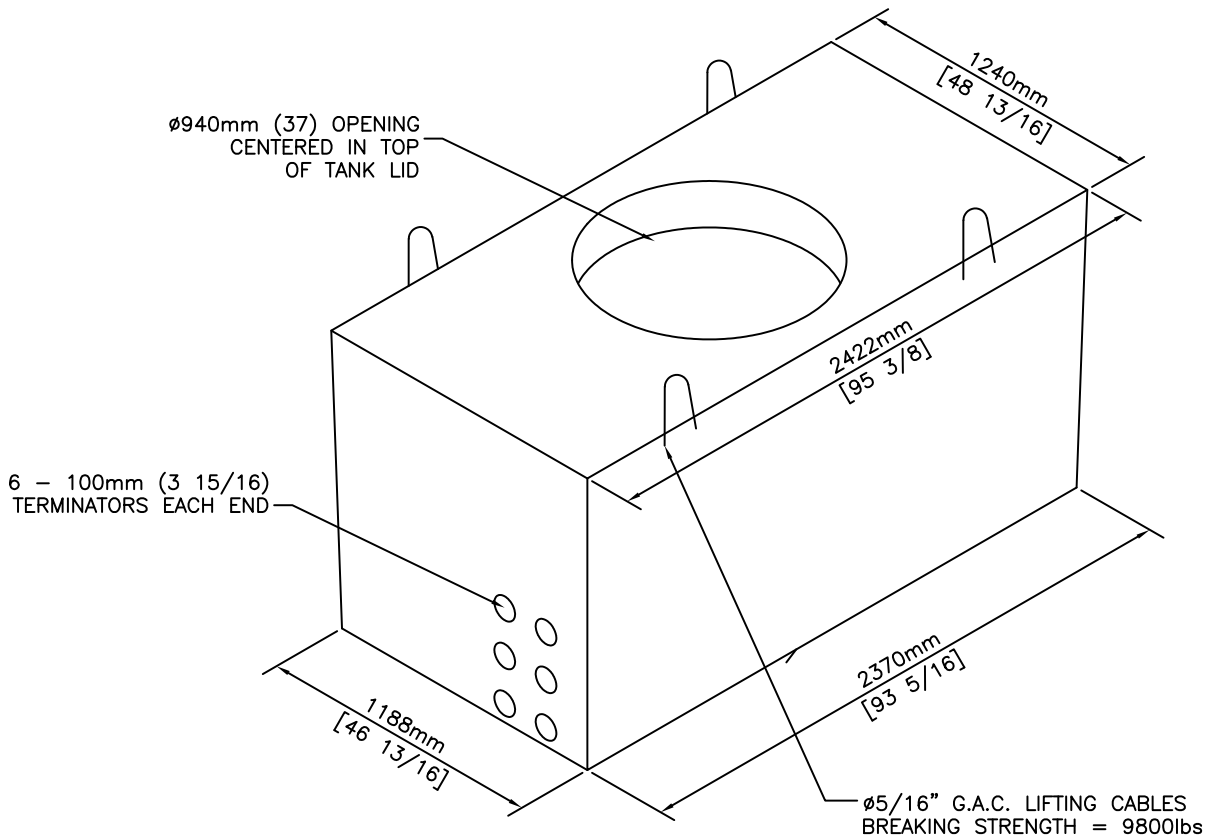


**SECTIONS**

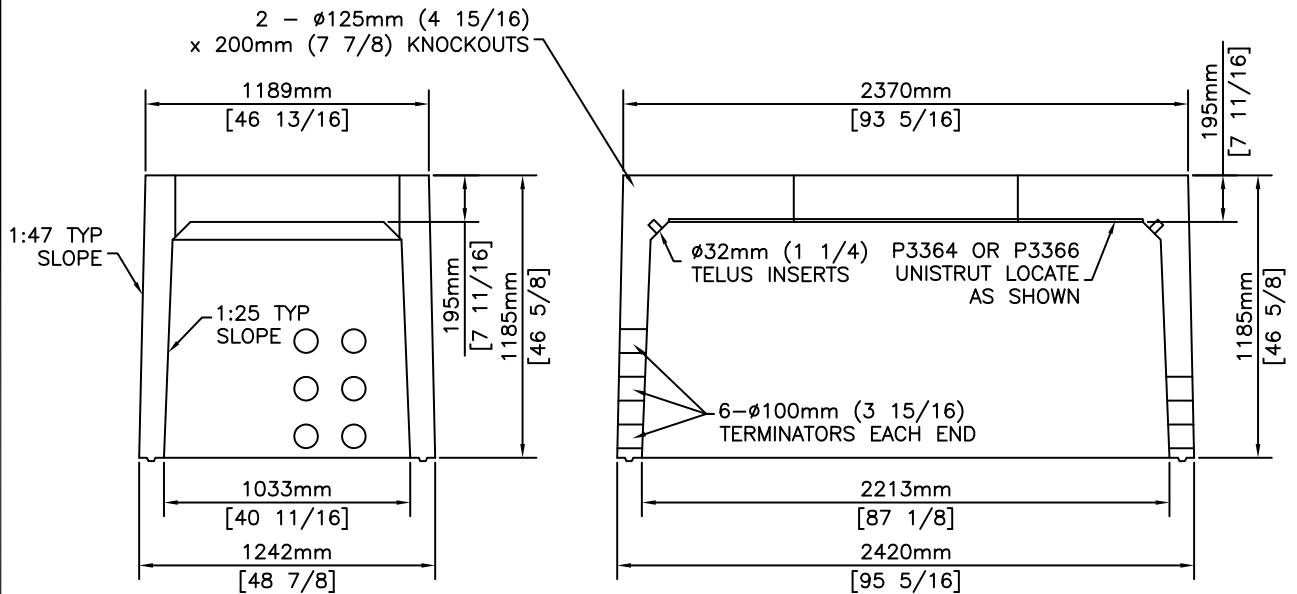
- NOTES:**
- 1) 30 MPa @ 28 DAYS
  - 2) MEETS H-20 LOADING
  - 3) TYPE 50 CONCRETE

REVISED: MAR 8 2005

 <p><b>KON KAST</b> products (2005) Ltd. "Committed To Quality And Service"</p>	<p>3440 UNIVERSITY WAY KELOWNA B.C. V1V 1V9 PH: (250)765-1423 FX: (250)765-0820</p>	BY: PKR	<p><b>PLMH 2102 MINI MANHOLE BOTTOM</b></p>	ITEM NO.
		DATE: MAR 8 05		<p><b>1156B</b></p>
		SCALE: NTS		



**ISOMETRIC**



**SECTIONS**

**NOTES:**

- 1) 30 MPa @ 28 DAYS
- 2) MEETS H-20 LOADING
- 3) TYPE 50 CONCRETE

REVISED: MAR 9 2005



**KON KAST**

products (2005) Ltd.  
 "Committed To Quality And Service"

3440 UNIVERSITY WAY  
 KELOWNA B.C.  
 V1V 1V9  
 PH: (250)765-1423  
 FX: (250)765-0820

BY: PKR

DATE: MAR 9 05

SCALE: NTS

**PLMH 2102  
 MINI MANHOLE  
 TOP**

ITEM NO.

**1156T**