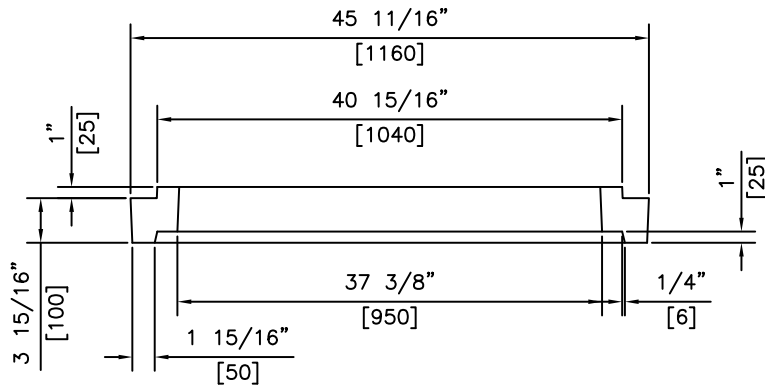


**PLAN**




**SECTION**

**NOTES:**

- 1) 30 MPa @ 28 DAYS
- 2) MEETS H-20 LOADING
- 3) TYPE 50 CONCRETE

REVISED: MAR 4 2005

 <p><b>KON KAST</b> products (2005) Ltd. "Committed To Quality And Service"</p>	<p>3440 UNIVERSITY WAY KELOWNA B.C. V1V 1V9 PH: (250)765-1423 FX: (250)765-0820</p>	BY: PKR	<p><b>TELUS TELEPHONE</b> <b>100mm EXTENSION</b> <b>RING</b></p>	ITEM NO.
		DATE: MAR 4 05		<p><b>1135</b></p>
		SCALE: NTS		