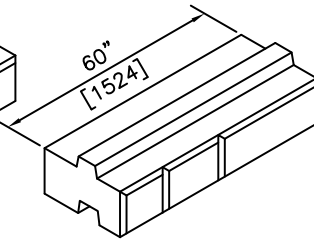
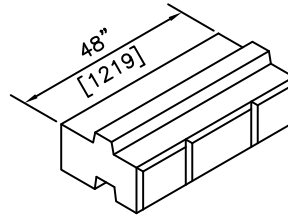


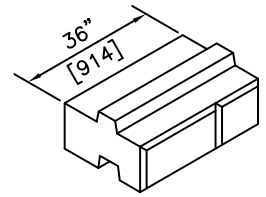
6' STRETCHER



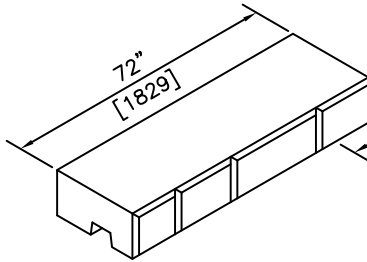
5' STRETCHER



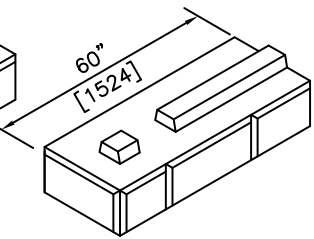
4' STRETCHER



3' STRETCHER

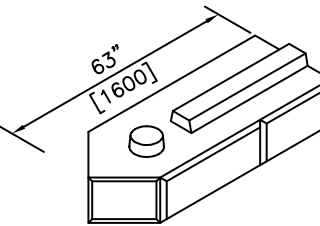


COPING



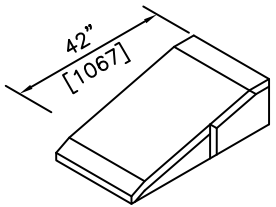
90° LH CORNER

AVAILABLE IN
RIGHT HAND



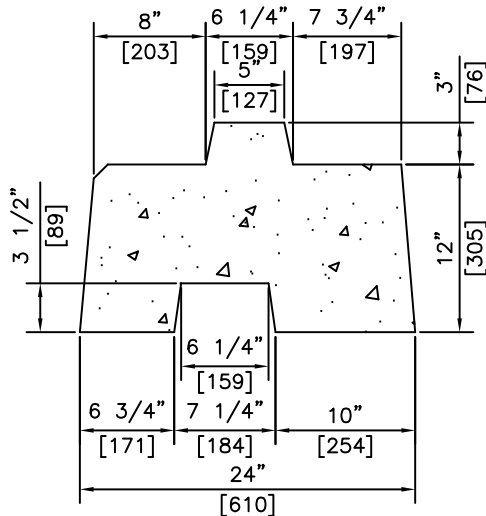
45° RH CORNER

AVAILABLE IN
RIGHT HAND

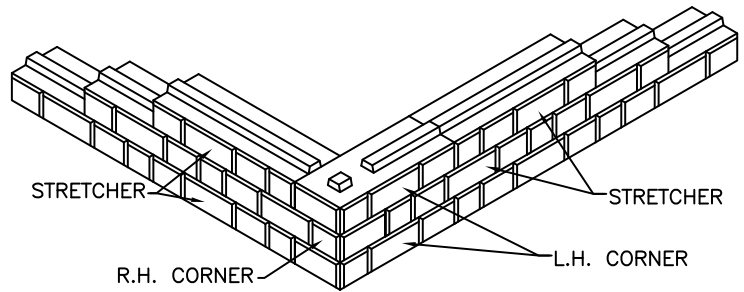


AVAILABLE IN
RIGHT HAND

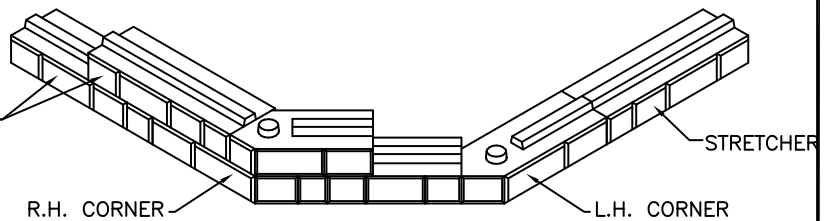
TAPER



TYPICAL BLOCK SECTION



90° CORNER INSTALLATION



90° CORNER INSTALLATION

NOTES:

1) 27.6MPa @ 28 DAYS

REVISED: MAR 17 2005



KON KAST

products (2005) Ltd.
"Committed To Quality And Service"

3440 UNIVERSITY WAY
KELOWNA B.C.
V1V 1V9
PH: (250)765-1423
FX: (250)765-0820

BY: PKR

DATE: MAR 17 05

SCALE: NTS

**DURA-HOLD
INTERLOCKING
RETAINING WALL**

ITEM NO.

1561