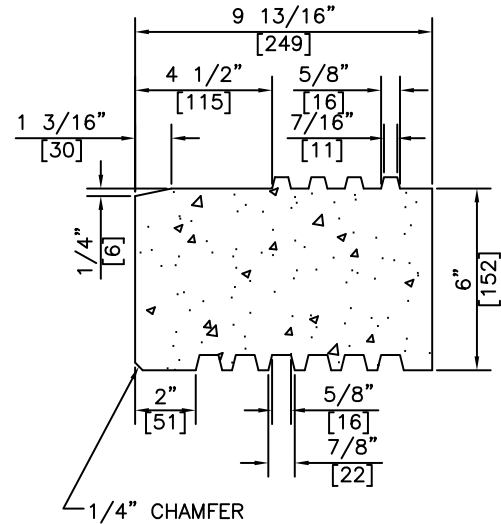
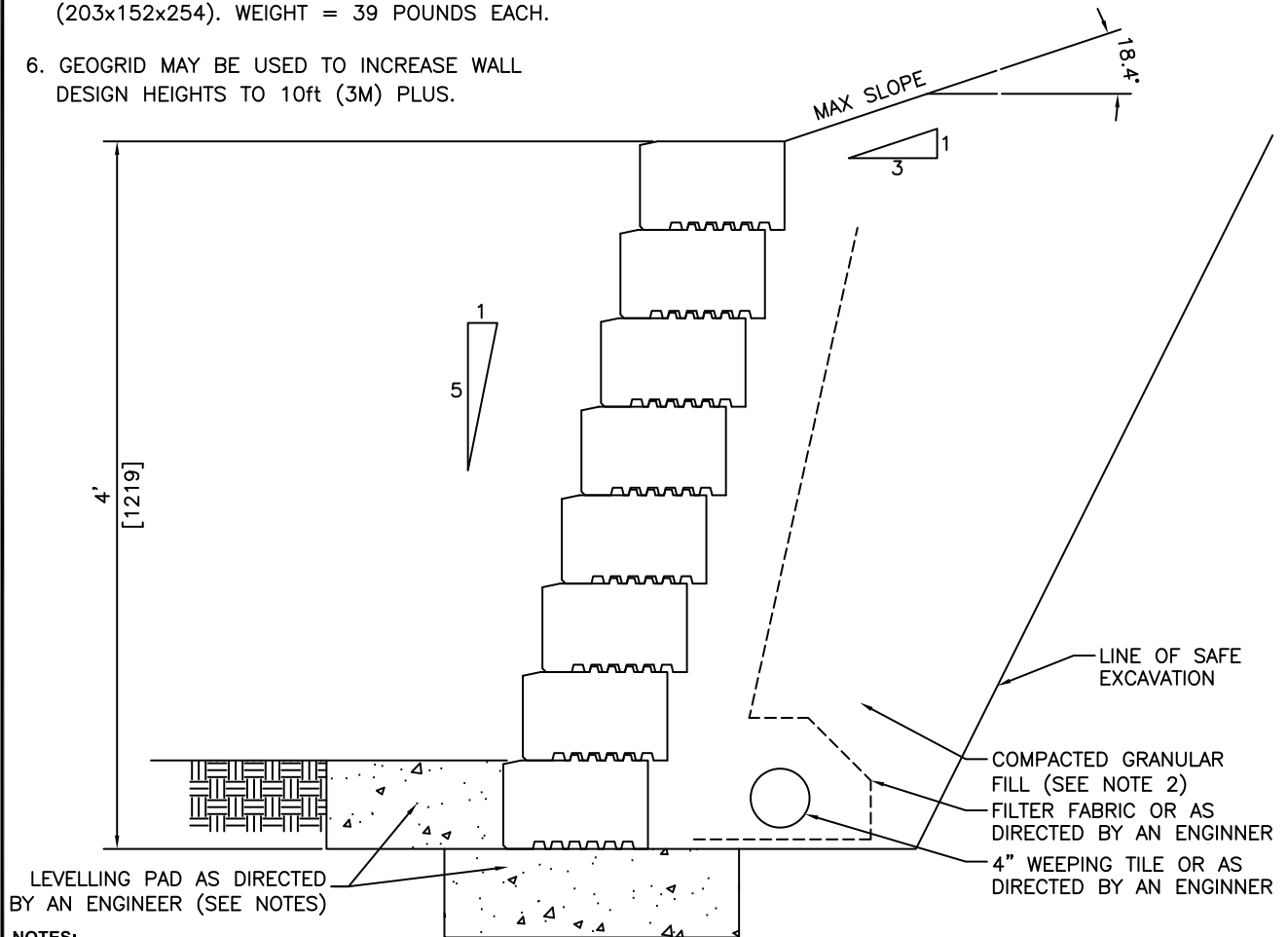


RECOMMENDED INSTALLATION

1. LEVELLING PAD TO BE FORMED USING 3/4" (19) CRUSH COMPACTED TO 100% STANDARD PROCTOR DENSITY. PAD TO BE 20" (510) WIDE. DEPTH TO BE DETERMINED BY PROJECT ENGINEER.
2. BACKFILL MATERIAL TO BE COMPACTED TO 95% STANDARD PROCTOR DENSITY. ALL BACKFILL SHALL BE FREE DRAINING, NON-FROST SUSCEPTIBLE GRANULAR MATERIAL WITH NO MORE THAN 5% PASSING THE #200 SIEVE.
3. ANY VARIATION FROM RECOMMENDED INSTALLATION REQUIRES REVIEW BY A PROFESSIONAL ENGINEER. SOIL CONDITIONS REQUIRE REVIEW BY A GEOTECHNICAL ENGINEER PRIOR TO CONSTRUCTION.
4. LEVELLING PAD TO BE CONSTRUCTED IF NOT ON UNDISTURBED GROUND, WITH A MINIMUM BEARING CAPACITY OF 3000 P.S.F.
5. PRECAST BLOCKS ARE 8" WIDE x 6" HIGH x 10" DEEP (203x152x254). WEIGHT = 39 POUNDS EACH.
6. GEOGRID MAY BE USED TO INCREASE WALL DESIGN HEIGHTS TO 10ft (3M) PLUS.



TYPICAL BLOCK SECTION



TYPICAL SECTION

REVISED: MAR 17 2005



KON KAST

products (2005) Ltd.
"Committed To Quality And Service"

3440 UNIVERSITY WAY
KELOWNA B.C.
V1V 1V9
PH: (250)765-1423
FX: (250)765-0820

BY: PKR

DATE: MAR 17 05

SCALE: NTS

**4'-0" GEORFORCE
RETAINING WALL
SYSTEM**

ITEM NO.

1540A