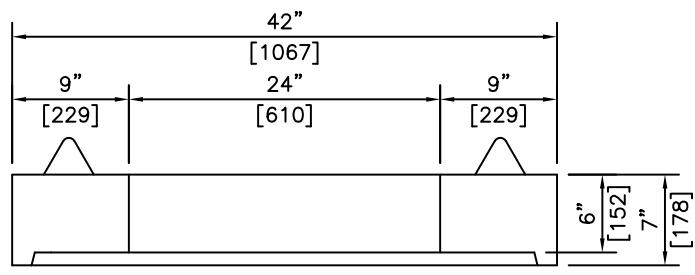
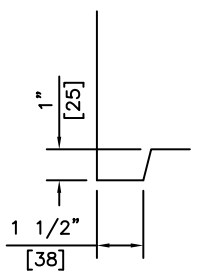


ISOMETRIC



SECTION




DETAIL

NOTES:

- 1) MEETS OR EXCEEDS ASTM C478
- 2) 27.6 MPa @ 28 DAYS
- 3) MEETS H-20 LOADING

REVISED: FEB 7 2005

 KON KAST products (2005) Ltd. "Committed To Quality And Service"	3440 UNIVERSITY WAY KELOWNA B.C. V1V 1V9 PH: (250)765-1423 FX: (250)765-0820	BY: PKR	42" (1067) O.D. LID HWYS OPENING FOR 36" (900) BARREL	ITEM NO.
		DATE: FEB 7 05		717
		SCALE: NTS		