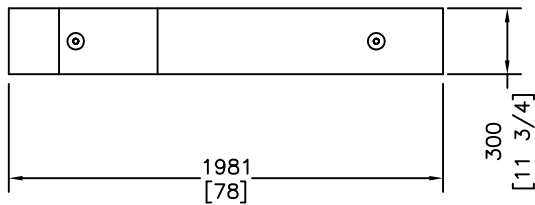
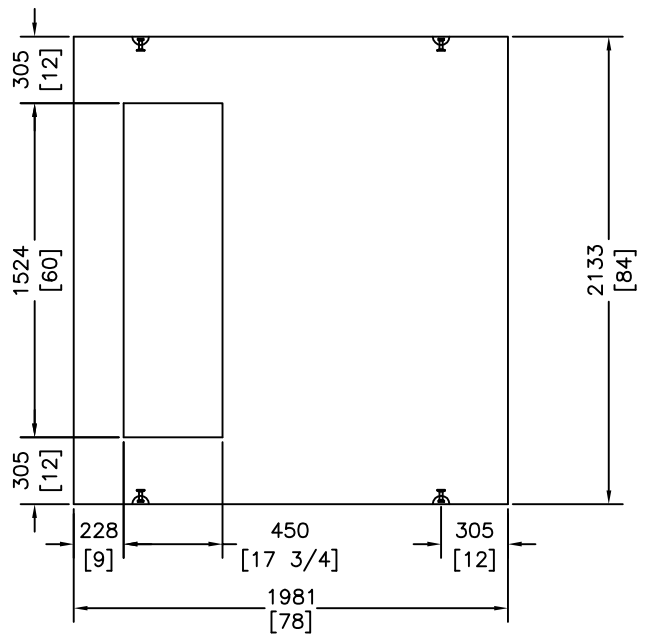


ISOMETRIC VIEW

c/w 4-170mm LIFTING ANCHORS FOR HANDLING



ELEVATION VIEW




PLAN VIEW

NOTES:

- 1) 30 Mpa @ 28 DAYS
- 2) FIBRILATTED FIBRE MESH CONCRETE
- 3) SULPHATE RESISTANT CONCRETE

REVISED: APR 2 2014

 <p>KON KAST products (2005) Ltd. "Committed To Quality And Service"</p>	1313 INNOVATION DR KELOWNA B.C. V1V 3B3 PH: (250)765-1423 FX: (250)765-0820	BY: PKR DATE: FEB 28 03 SCALE:	<p>3 PHASE TRANSFORMER PAD FORTIS #1596</p>	DRAWING <p>1058B</p>