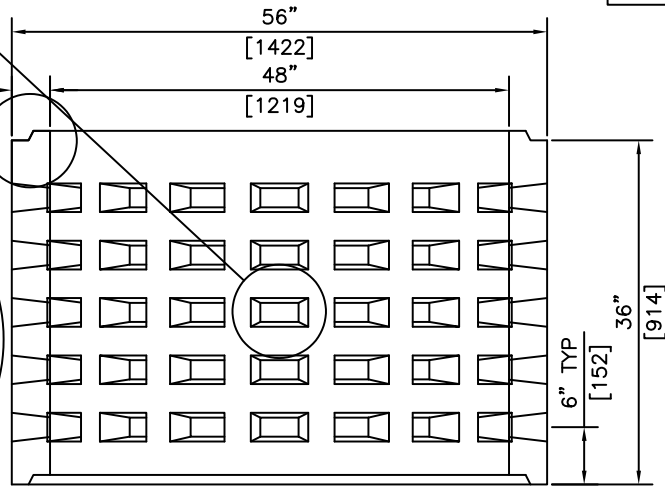


ISOMETRIC




SECTION

NOTE:
c/w 2-3 3/8" UNI-LIFT
ANCHORS FOR HANDLING

- NOTES:**
1) 27.6 MPa @ 28 DAYS
2) MEETS H-20 LOADING

REVISED: MAR 27 2006

 <p>KON KAST products (2005) Ltd. "Committed To Quality And Service"</p>	<p>3440 UNIVERSITY WAY KELOWNA B.C. V1V 1V9 PH: (250)765-1423 FX: (250)765-0820</p>	<p>BY: PKR</p>	<p>100 HOLE DRAINAGE DRYWELL x 36" (914) HEIGHT</p>	<p>ITEM NO.</p>
		<p>DATE: FEB 7 05</p>		<p>625</p>
		<p>SCALE: NTS</p>		