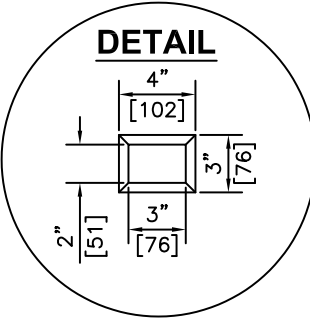
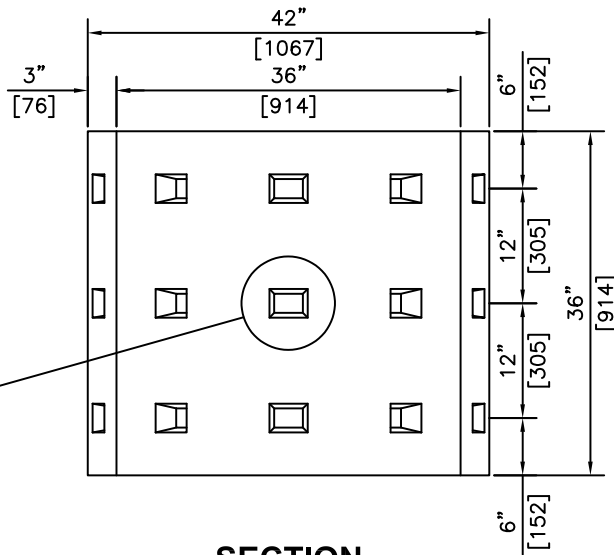


TOTAL OF 30 HOLES

**ISOMETRIC**

NOTE:  
HOLE SIZE FOR  $\phi$ 1" LIFTING  
PINS =  $\phi$ 1 1/4"



**SECTION**

**NOTES:**

1) 25 MPa @ 28 DAYS

REVISED: FEB 7 2005



**KON KAST**

products (2005) Ltd.  
"Committed To Quality And Service"

3440 UNIVERSITY WAY  
KELOWNA B.C.  
V1V 1V9  
PH: (250)765-1423  
FX: (250)765-0820

BY: PKR

DATE: FEB 7 05

SCALE: NTS

**Ø36" (914)**

**DRAINAGE DRYWELL**

**x 36" (914) HEIGHT**

ITEM NO.

**603**