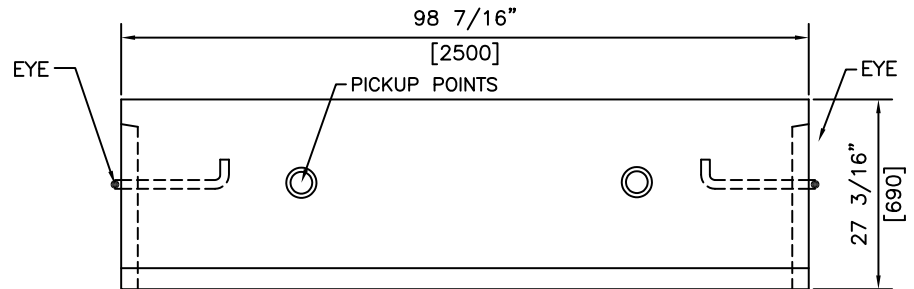
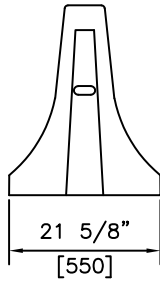
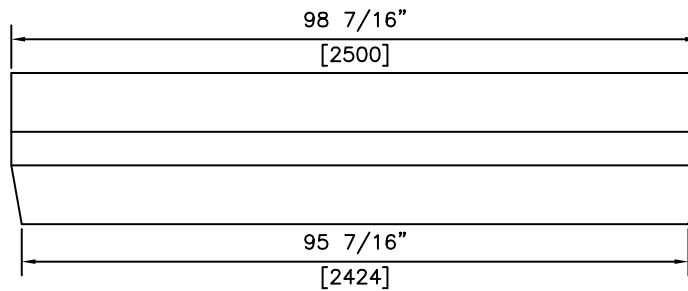


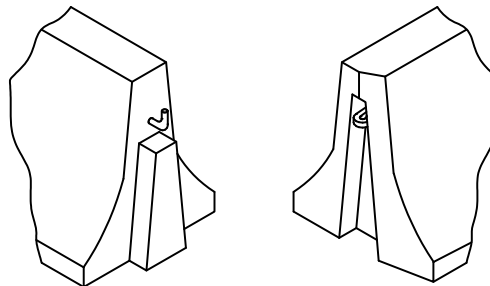
MALE BARRIER



FEMALE BARRIER



PLAN VIEW (FEMALE BARRIER)



NOTES:

- 1) 30MPa @ 28 DAYS
- 2) FIBRILLATED FIBRE STRAND REINFORCED CONCRETE

DETAILS

REVISED: MAR 21 2006

KON KAST
products (2005) Ltd.
"Committed To Quality And Service"

3440 UNIVERSITY WAY
KELOWNA B.C.
V1V 1V9
PH: (250)765-1423
FX: (250)765-0820

BY: PKR
DATE: FEB 24 05
SCALE: NTS

**TIGHT RADIUS
CRB-690
MALE & FEMALE**

ITEM NO.
925TR