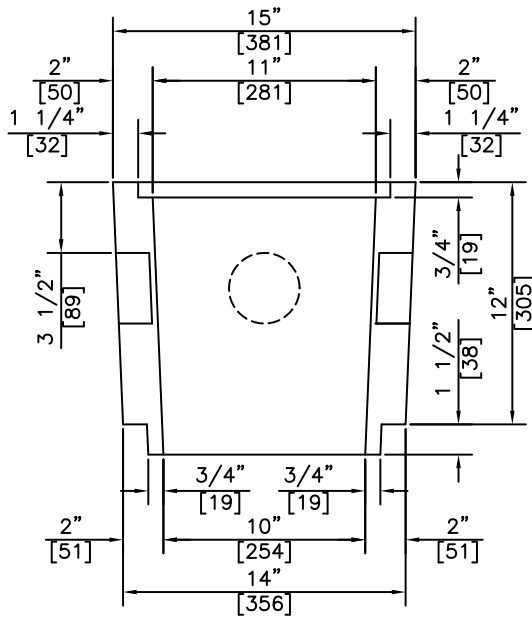


**ISOMETRIC**



**ISOMETRIC**

**NOTES:**

- 1) 25 MPa @ 28 DAYS
- 2) AVAILABLE WITH A POURED IN BASE ALSO

REVISED: FEB 10 2005



**KON KAST**  
products (2005) Ltd.  
"Committed To Quality And Service"

3440 UNIVERSITY WAY  
KELOWNA B.C.  
V1V 1V9  
PH: (250)765-1423  
FX: (250)765-0820

BY: PKR  
DATE: FEB 10 05  
SCALE: NTS

**RESIDENTIAL  
CATCH BASIN  
12" (305) HEIGHT**

ITEM NO.

**825**