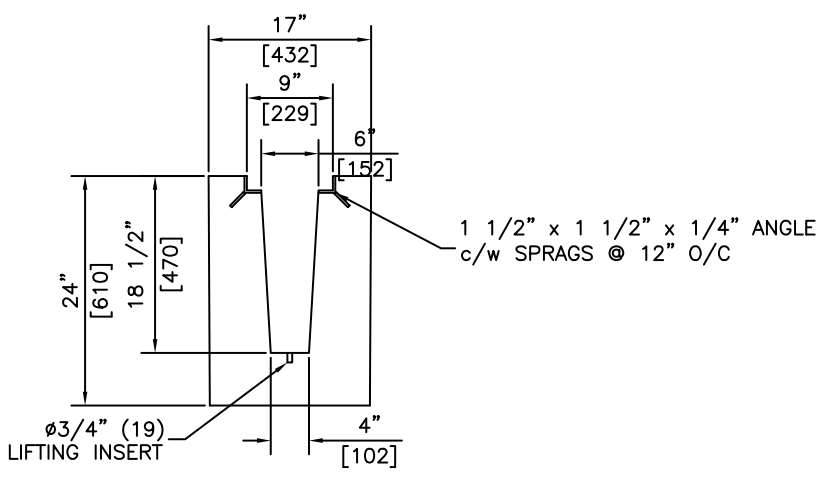



**ISOMETRIC**



**SECTION**

- NOTES:**  
 1) 27.6 MPa @ 28 DAYS  
 2) NOTE THAT UNITS DO NOT HAVE INTERLOCKING TONGUE & GROOVE

REVISED: MAR 10 2005

 <b>KON KAST</b> products (2005) Ltd. "Committed To Quality And Service"	3440 UNIVERSITY WAY KELOWNA B.C. V1V 1V9 PH: (250)765-1423 FX: (250)765-0820	BY: PKR	<b>DRAINAGE TROUGH</b>	ITEM NO.
		DATE: MAR 10 05		<b>1431</b>
		SCALE: NTS		